

[54] **HIGH EFFICIENCY STOVE AND
ZERO-CLEARANCE FIREPLACE INSERT**

[75] **Inventor:** Albert B. Chamberlain, Stone
Mountain, Ga.
[73] **Assignee:** Atlanta Stove Works, Inc., Atlanta,
Ga.
[**] **Term:** 14 Years
[21] **Appl. No.:** 263,976
[22] **Filed:** May 15, 1981

[51] **Int. Cl.** D23-03
[52] **U.S. Cl.** D23/94
[58] **Field of Search** D23/92-97;
126/120, 121, 126, 128, 58, 60-66

[56] **References Cited**
U.S. PATENT DOCUMENTS
D. 247,973 5/1978 Bergstrom D23/94

4,178,908 12/1979 Trexler 126/121
4,206,744 6/1980 Mahoney et al. 126/121
4,271,815 6/1981 Johnson 126/121
4,287,871 9/1981 Schumann et al. 126/121 X

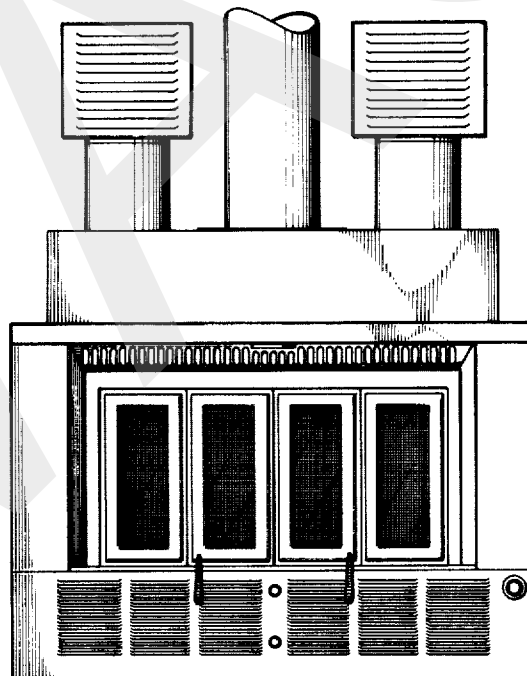
Primary Examiner—Catherine E. Kemper
Attorney, Agent, or Firm—Newton, Hopkins & Ormsby

[57] **CLAIM**

The ornamental design for a high efficiency stove and zero-clearance fireplace insert, as shown and described.

DESCRIPTION

FIG. 1 is a front elevational view of a high efficiency stove and zero clearance fireplace insert, showing my new design;
FIG. 2 is a top plan view thereof;
FIG. 3 is a right side elevational view thereof;
FIG. 4 is a left side elevational view thereof;
FIG. 5 is a rear elevational view thereof;
FIG. 6 is a bottom plan view thereof.
The flue pipe is shown broken off in all views in which it appears to indicate indeterminate length.



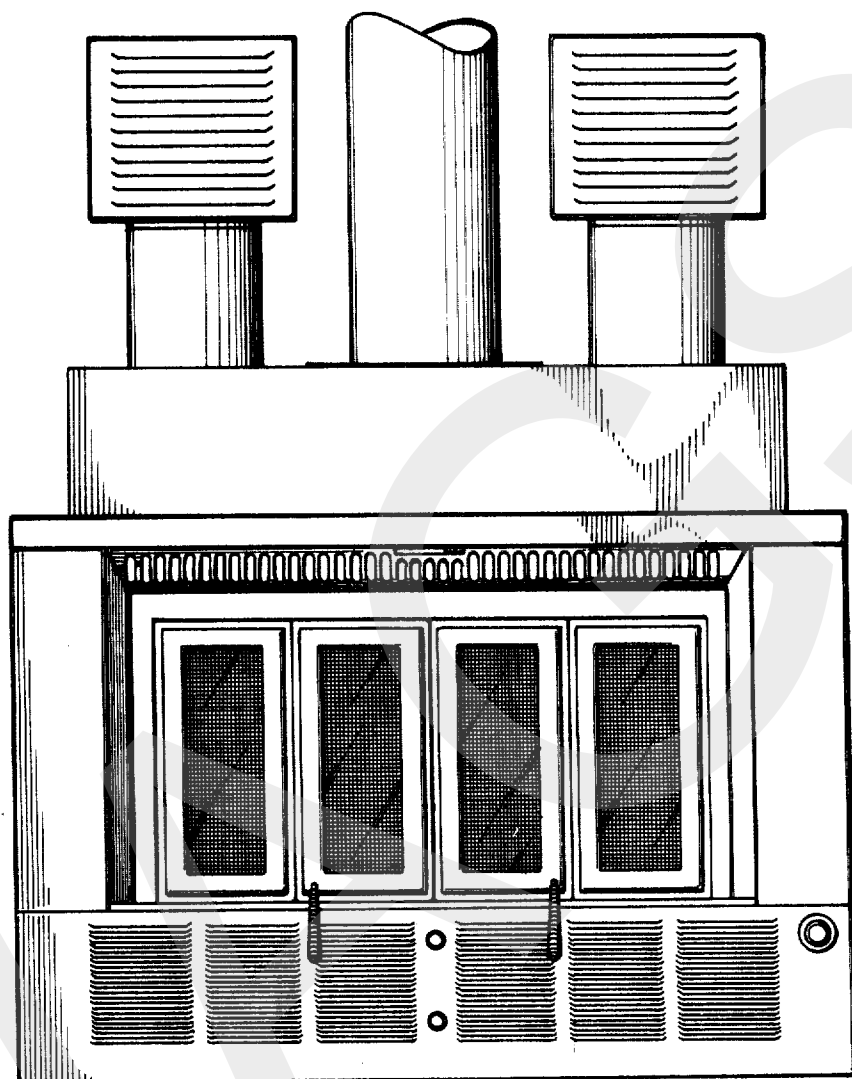


FIG 1

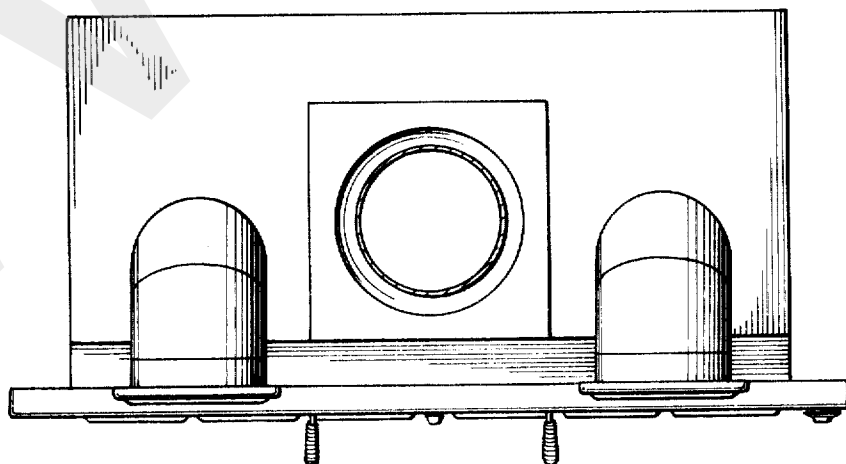


FIG 2

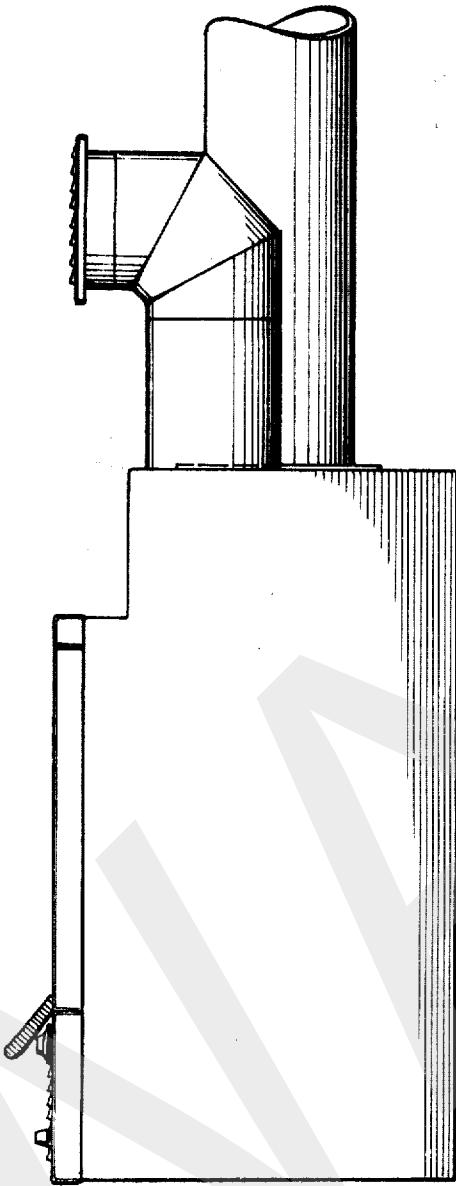


FIG 3

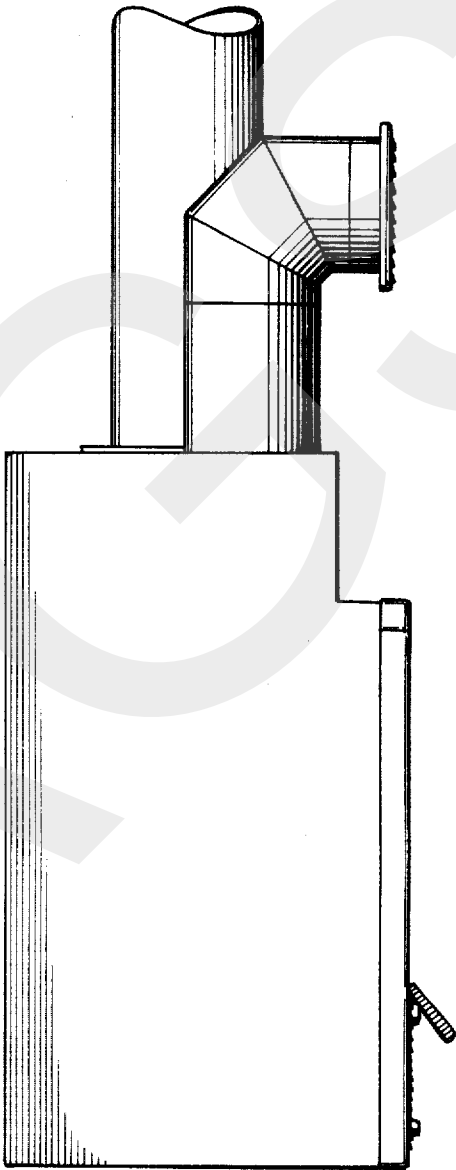


FIG 4

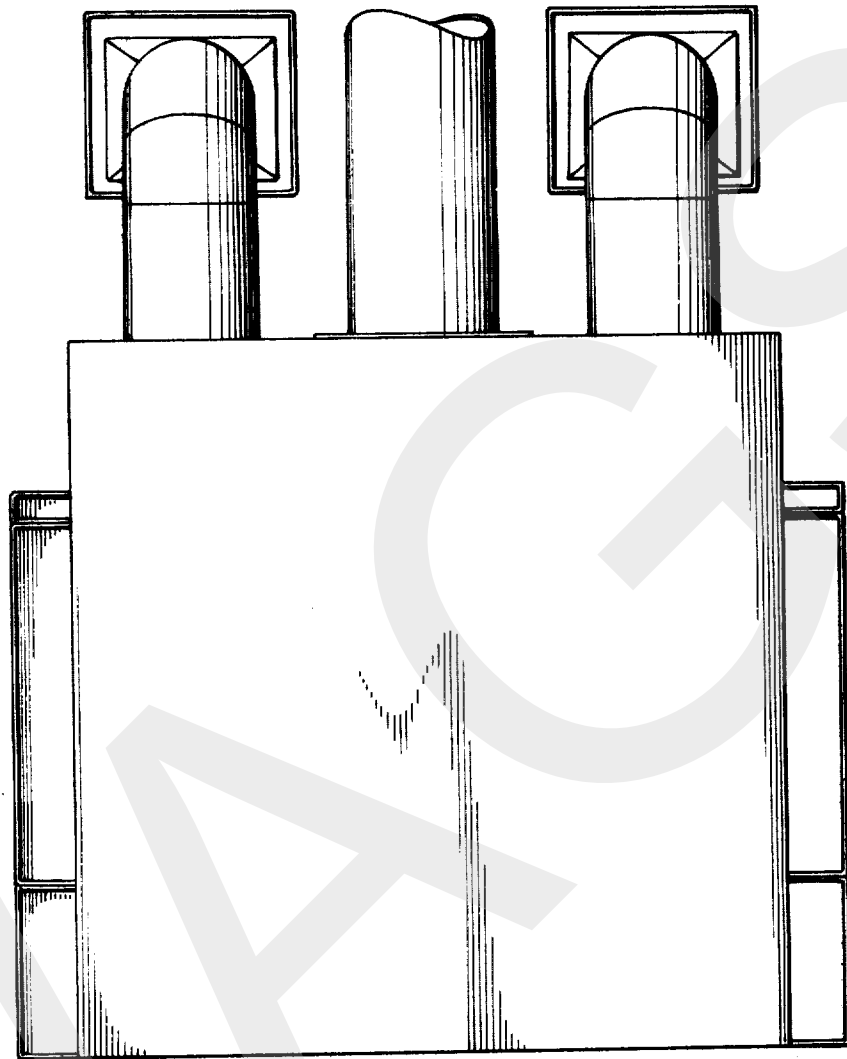


FIG 5

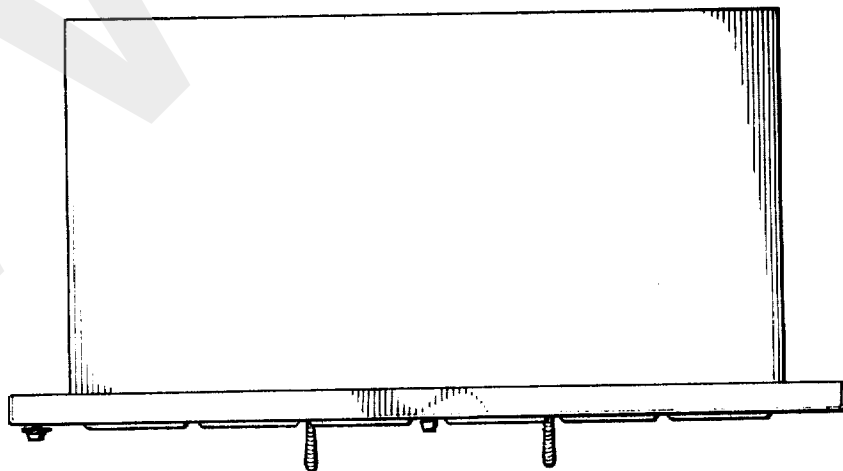


FIG 6