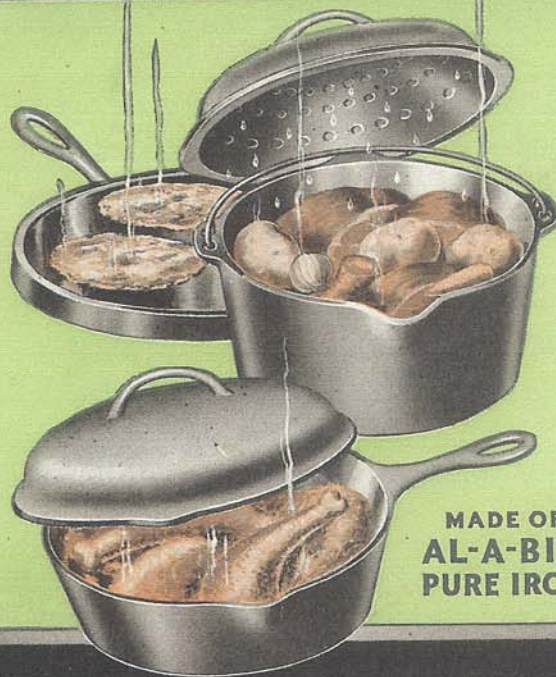


Red MOUNTAIN *Line* HOLLOWWARE

Red Mountain *Double Life* **Cast Iron Cookware**

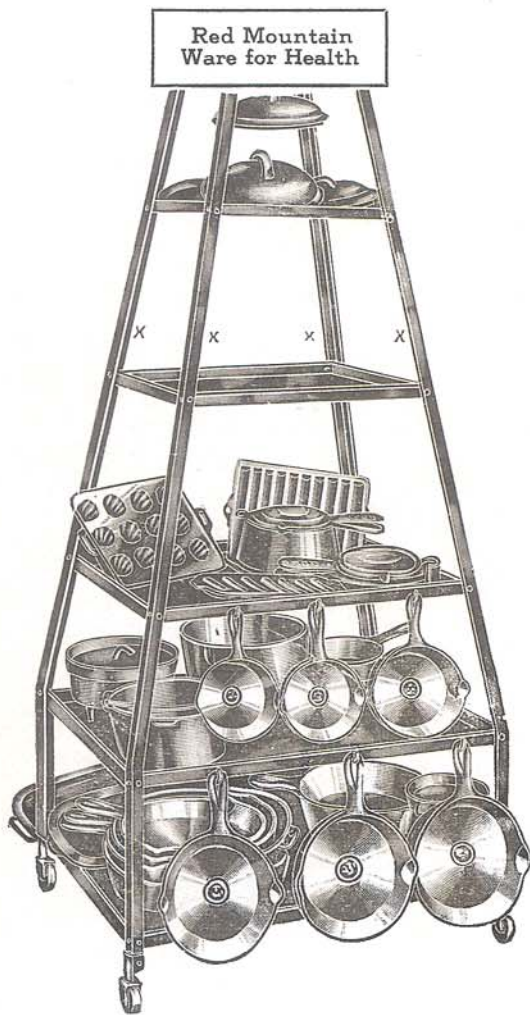


MADE OF
AL-A-BIR
PURE IRON

No Scorched or Burned Food



Red MOUNTAIN



These Display
Stands Will Sell
Red Mountain Ware

DUO-DISPLAY STAND

This "Silent Salesman" will sell enough hollow-ware within one week to more than pay for itself. It only occupies a floor space 24" x 33". It is beautifully finished and mounted on large, easy rolling casters. Display Stand No. 1 is six feet in height. Where height is objectionable, Stand No. 2, with movable counter at convenient "sales" height (indicated by XXXX in illustration) provides maximum display with minimum space. Display Stands are shipped knocked down. We sell these to our dealers at cost.

★
"Hide 'em and
Keep 'em"

★
"Show 'em and
Sell 'em"

No.	Wt. each
1	90 lbs.
2	65 lbs.

All Red Mountain Hollowware made from Pure Pig Iron

SKILLET RACK

This No. 3 Skillet Rack is 18½ inches in length. Made of channel iron. Furnished with rubber tips. Presents samples attractively. Sold to dealers at cost.

KEY TO FINISHES

Plain.....Smooth Natural Finish
AA.....Ground and doubled polished



"Builders of the South's Finest"
« 102 »

HOLLOWWARE

SUGAR KETTLES—ENGLISH POTS

SUGAR KETTLE

Size for size larger than average. Smooth inside and varnished on outside. Made with stop lugs to prevent wedging. With 2½-inch legs.



SPECIFICATIONS

No.	Depth	Actual Capacity	Top Diameter	Average Wt. Ea.
8	10⅝"	6.12 Gals.	16⅞"	24 lbs.
10	10⅞"	8.25 Gals.	18"	34 lbs.
12	12"	10.00 Gals.	19⅞"	42 lbs.
15	12½"	12.50 Gals.	20⅝"	49 lbs.
20	13½"	16.00 Gals.	21⅝"	52 lbs.
25	14½"	21.00 Gals.	24"	73 lbs.
30	15⅞"	23.00 Gals.	25½"	99 lbs.
35	16¼"	30.00 Gals.	26⅝"	105 lbs.

Sugar Kettles and English Pots made from Pure Pig Iron



ENGLISH POT

Size for size larger than average. Smooth inside and varnished on outside. Made with stop lugs to prevent wedging. With 2½-inch legs.

SPECIFICATIONS

No.	Actual Capacity	Average Wt. Ea.
8	7.32 Gals.	32 lbs.
10	9.25 Gals.	38 lbs.
12	12.00 Gals.	46 lbs.
15	13.75 Gals.	50 lbs.
18	16.00 Gals.	56 lbs.
20	18.63 Gals.	66 lbs.

Stoves for over thirty Years"



Red MOUNTAIN



DUTCH OVEN WITH LOW COVER

Lacquered

Covers illustrated on opposite page.
Trivet for Dutch Oven illustrated below.

SPECIFICATIONS

No.	Depth	Capacity	Top Diameter	Average Wt. Per Dozen
6	3 $\frac{5}{8}$ "	3 Qts.	8 $\frac{1}{16}$ "	90 lbs.
7	3 $\frac{3}{4}$ "	4 Qts.	9 $\frac{1}{16}$ "	114 lbs.
8	4"	5 Qts.	10 $\frac{5}{8}$ "	144 lbs.
9	4 $\frac{1}{4}$ "	6 Qts.	11 $\frac{7}{16}$ "	168 lbs.
10	4 $\frac{7}{8}$ "	8 Qts.	12 $\frac{7}{16}$ "	202 lbs.
12	7"	12 Qts.	13 $\frac{3}{8}$ "	258 lbs.

Can be furnished in plain or AA finishes.

NOTE: Weights listed above include cover.



REGULAR SKILLET

Lacquered

SPECIFICATIONS

No.	Depth	Top Diameter	Average Wt. Per Dozen
3-S	1 $\frac{3}{16}$ "	6 $\frac{1}{4}$ "	21 lbs.
3	1 $\frac{3}{16}$ "	6 $\frac{5}{8}$ "	28 lbs.
4	1 $\frac{1}{2}$ "	7 $\frac{3}{16}$ "	31 lbs.
5	1 $\frac{3}{4}$ "	8"	32 lbs.
6	1 $\frac{7}{8}$ "	8 $\frac{1}{16}$ "	39 lbs.
7	2"	9 $\frac{1}{16}$ "	52 lbs.
8	2"	10 $\frac{5}{8}$ "	56 lbs.
9	2"	11 $\frac{7}{16}$ "	65 lbs.
10	2 $\frac{1}{8}$ "	12 $\frac{7}{16}$ "	78 lbs.
12	2 $\frac{1}{4}$ "	13 $\frac{3}{8}$ "	95 lbs.
14	2 $\frac{1}{4}$ "	15 $\frac{3}{8}$ "	140 lbs.

Sizes No. 6 through No. 12 can be used in connection with Dutch Oven Covers of corresponding sizes.

Can be furnished in plain or AA finishes.



COMBINATION DUTCH OVEN DOUBLE BOILER

Lacquered

The most useful and economical of all cooking utensils.

Cover can be used on either of the two vessels separately or in combination.

SPECIFICATIONS

No.		Combination Weight
7	Dutch Oven, Low Cover and Flat Bottom Stove Kettle.....	19 lbs.
8	Dutch Oven, Low Cover and Flat Bottom Stove Kettle.....	24 lbs.
9	Dutch Oven, Low Cover and Flat Bottom Stove Kettle.....	28 lbs.

Can be furnished in plain or AA finishes



TRIVET

To fit all sizes Dutch Ovens

No	
6—7	Fit Nos. 6 and 7 Dutch Ovens
8—9	Fit Nos. 8 and 9 Dutch Ovens
10—12	Fit Nos. 10 and 12 Dutch Ovens

"Builders of the South's Finest

HOLLOWWARE



FLAT BOTTOM STOVE KETTLE

With bail and tilting ring
Lacquered

SPECIFICATIONS

No.	Depth	Capacity	Top Diameter	Average Wt. Per Dozen
7	5 $\frac{3}{4}$ "	6 Qts.	9 $\frac{11}{16}$ "	115 lbs.
8	6"	8 Qts.	10 $\frac{5}{8}$ "	147 lbs.
9	6 $\frac{1}{2}$ "	10 Qts.	11 $\frac{1}{16}$ "	175 lbs.

Relative size covers (High Type or Low Type) may be used on above utensils if desired. Covers extra.

Can be furnished in plain or AA finishes.



DEEP SKILLET OR CHICKEN FRYER

With low cover
Lacquered

SPECIFICATIONS

No.	Depth	Top Diameter	Average Wt. Per Dozen
7	3"	9 $\frac{11}{16}$ "	112 lbs.
8	3"	10 $\frac{5}{8}$ "	132 lbs.
9	3"	11 $\frac{1}{16}$ "	144 lbs.
10	3"	12 $\frac{1}{16}$ "	190 lbs.

These utensils designed to use covers (High Type or Low Type) of corresponding sizes.

Can be furnished in plain or AA finishes.

COMBINATION COVERS

With the famous steam condensing features carrying ample basting elements. Size for size interchangeable on Dutch Ovens, Regular Skillets, Deep Skillets or Chicken Fryers and Flat Bottom Stove Kettles.



HIGH TYPE COVER

Lacquered

Furnished in sizes Nos. 6, 7, 8, 9, 10 and 12. Note depressed basting elements, making covers more easily cleaned, therefore, more sanitary.



LOW TYPE COVER

Lacquered

Furnished in sizes Nos. 6, 7, 8, 9, 10 and 12. Note depressed basting elements, making covers more easily cleaned, therefore, more sanitary.

SPECIFICATIONS

No.	High Covers Weight per Dozen	Low Covers Weight per Dozen
6	38 lbs.	35 lbs.
7	47 lbs.	42 lbs.
8	58 lbs.	50 lbs.
9	70 lbs.	60 lbs.
10	75 lbs.	67 lbs.
12	90 lbs.	80 lbs.

*All Red Mountain Hollowware
made from Pure Pig Iron*

Stoves for over thirty Years



Red MOUNTAIN



STEW PAN
With Low Cover
Lacquered

SPECIFICATIONS

No.	Capacity	Top Diameter	Average Wt. Per Dozen
3	3 Qts.	8 $\frac{7}{8}$ "	100 lbs.
4	4 Qts.	9 $\frac{7}{8}$ "	106 lbs.
5	5 Qts.	10 $\frac{7}{8}$ "	124 lbs.
6	6 Qts.	11 $\frac{1}{2}$ "	168 lbs.

*The above furnished in the plain finish only.
The above weights include the weight of cover.*



SAUCE PAN
With Low Cover
Lacquered

SPECIFICATIONS

No.	Capacity	Top Diameter	Average Wt. Per Dozen
2	2 Qts.	6 $\frac{1}{16}$ "	60 lbs.
3	3 Qts.	6 $\frac{11}{16}$ "	78 lbs.
4	4 Qts.	6 $\frac{13}{16}$ "	90 lbs.
6	6 Qts.	8 $\frac{3}{8}$ "	129 lbs.
8	8 Qts.	9"	160 lbs.

*The above furnished in the plain finish only.
The above weights include the weight of cover.*



BAILED GRIDDLE
With self-locking bail and raised bottom
Lacquered

SPECIFICATIONS

No.	Diameter	Average Wt. Per Dozen
12	11 $\frac{1}{2}$ "	53 lbs.
14	13 $\frac{3}{4}$ "	92 lbs.
16	15 $\frac{1}{2}$ "	102 lbs.

The above can be furnished in plain or AA finish.



HANDLED GRIDDLE
Raised bottom to allow heat circulation
Lacquered

SPECIFICATIONS

No.	Diameter	Average Wt. Per Dozen
6	7 $\frac{1}{4}$ "	26 lbs.
7	8"	32 lbs.
8	9 $\frac{1}{8}$ "	38 lbs.
9	10 $\frac{1}{2}$ "	45 lbs.
10	11 $\frac{1}{2}$ "	58 lbs.

Can be furnished in plain or AA finishes.

"Builders of the South's Finest"

HOLLOWWARE



LONG FLAT BOTTOM GRIDDLE
Lacquered

SPECIFICATIONS		
No.	Size	Average Wt. Per Dozen
8	9 x 19"	108 lbs.
9	10 $\frac{3}{16}$ x 21 $\frac{7}{16}$ "	150 lbs.
10	12 $\frac{1}{2}$ x 24 $\frac{11}{16}$ "	200 lbs.

Can be furnished in plain or AA finishes.



SOUTHERN BULGED STOVE POT
With Bail
Varnished Outside

SPECIFICATIONS				
No.	Depth	Capacity	Diameter	Average Wt. Per Dozen
7	7 $\frac{1}{2}$ "	8 Qts.	7 $\frac{3}{4}$ "	108 lbs.
8	8"	10 Qts.	8 $\frac{3}{4}$ "	120 lbs.

The above furnished in the plain finish only.



COMMON FLAT BOTTOM STOVE POT
With Bail
Varnished Outside

SPECIFICATIONS				
No.	Depth	Capacity	Top Diameter	Average Wt. Per Dozen
7	6"	6 Qts.	8 $\frac{3}{4}$ "	108 lbs.
8	6 $\frac{1}{2}$ "	8 Qts.	9 $\frac{5}{8}$ "	120 lbs.
9	6 $\frac{1}{2}$ "	10 Qts.	11"	165 lbs.

The above furnished in plain finish only.



STRAIGHT POT
With Bail
Varnished Outside

SPECIFICATIONS				
No.	Depth	Capacity	Diameter	Average Wt. Per Dozen
7	7 $\frac{1}{8}$ "	6 Qts.	9 $\frac{1}{2}$ "	96 lbs.
8	7 $\frac{1}{8}$ "	8 Qts.	10 $\frac{1}{4}$ "	104 lbs.
9	8"	11 Qts.	10 $\frac{3}{4}$ "	165 lbs.

Furnished in the plain finish only.

*All Red Mountain Hollowware
made from Pure Pig Iron*

Stoves for over thirty Years"



Red MOUNTAIN



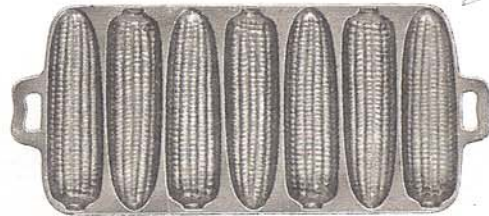
GEM MUFFIN PAN

Lacquered

SPECIFICATIONS

No.	Size Muffin	Size of Pan	Average Wt. Per Dozen
12	3"	10 $\frac{3}{8}$ x 13 $\frac{3}{8}$ "	55 lbs.
6	3"	7 $\frac{5}{16}$ x 10 $\frac{5}{8}$ "	45 lbs.

Plain Smooth Casting.



CORN COB PAN

Lacquered

SPECIFICATIONS

No.	Size of Pan Overall	Size of Cob	Average Wt. Per Dozen
7-Tea Size	4 x 8"	2 $\frac{5}{8}$ x 3 $\frac{1}{16}$ "	16 lbs.
5-S	5 $\frac{1}{2}$ x 9 $\frac{1}{8}$ "	1 $\frac{3}{8}$ x 5 $\frac{1}{4}$ "	30 lbs.
7-S	5 $\frac{1}{2}$ x 12 $\frac{3}{4}$ "	1 $\frac{3}{4}$ x 5 $\frac{1}{4}$ "	40 lbs.
7-L	6 $\frac{5}{8}$ x 15"	1 $\frac{3}{4}$ x 6 $\frac{3}{8}$ "	55 lbs.

Plain Smooth Casting.



CAST TEA KETTLE

Varnished Outside

SPECIFICATIONS

No.	Capacity	Average Wt. Per Dozen
7	4 $\frac{1}{2}$ Qts.	108 lbs.
8	6 Qts.	126 lbs.

Plain Smooth Casting.



BREAD STICK PAN

Lacquered

SPECIFICATIONS

No.	Size of Pan Overall	Size of Stick	Average Wt. Per Dozen
11	6 $\frac{5}{8}$ x 12"	6 $\frac{1}{4}$ x 1"	66 lbs.
5	6 $\frac{5}{8}$ x 5 $\frac{5}{8}$ "	6 $\frac{1}{2}$ x 1"	30 lbs.

Plain Smooth Casting.

*All Red Mountain Holloware
made from Pure Pig Iron*

"Builders of the South's Finest"

HOLLOWWARE



STOVE SPIDER

Lacquered

SPECIFICATIONS

No.	Depth	Top Diameter	Average Wt. Per Dozen
7	1 7/8"	9 1/2"	47 lbs.
8	1 7/8"	10"	50 lbs.
9	2"	11 5/8"	64 lbs.

Smooth surfaces inside and out. No gate marks.
Furnished in plain finish only.



STOVE GRIDDLE

Lacquered

SPECIFICATIONS

No.	Diameter	Average Wt. Per Dozen
7	8 5/8"	34 lbs.
8	9 3/4"	36 lbs.
9	10 3/4"	44 lbs.

Furnished in plain finish only.

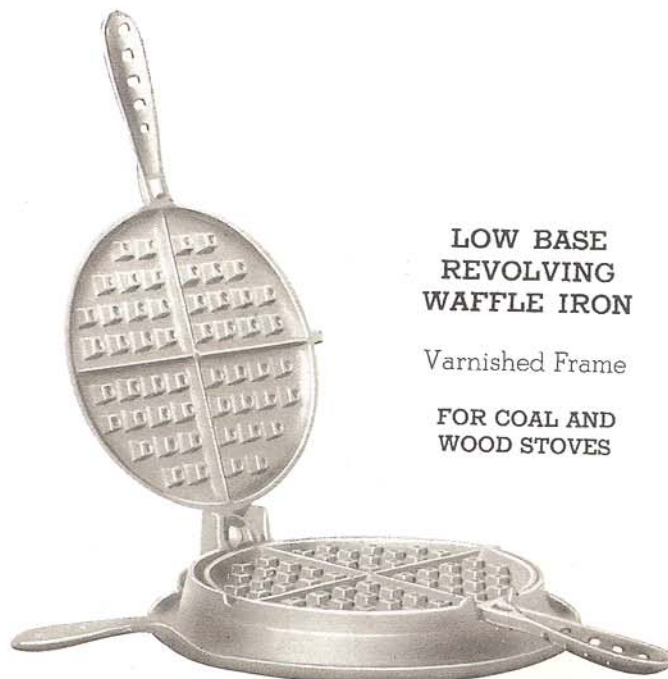


LONG PAN OR FISH FRYER

SPECIFICATIONS

No.	Size	Average Wt. Per Dozen
7	8 1/4 x 19 3/8"	60 lbs.
8	9 1/4 x 21 1/4"	84 lbs.

Furnished in plain finish only.



LOW BASE REVOLVING WAFFLE IRON

Varnished Frame

FOR COAL AND WOOD STOVES

SPECIFICATIONS

No.	Base Diameter	Average Wt. Per Dozen
7	8 1/2"	78 lbs.
8	9 3/4"	90 lbs.

Plain Smooth Finish.



HIGH BASE REVOLVING WAFFLE IRON FOR GAS STOVES

Varnished Frame

SPECIFICATIONS

No.	Base Diameter	Average Wt. Per Dozen
8	11 1/4"	132 lbs.

Plain Smooth Finish.

Stoves for over thirty Years"



Red

MOUNTAIN



DEEP CAMP OVEN WITH LEGS

For fire place or open air cooking

SPECIFICATIONS

No.	Depth	Diameter	Average Wt. Each
9	4 $\frac{1}{8}$ "	9"	7 lbs.
10	4 $\frac{1}{4}$ "	10"	8 lbs.
11	4 $\frac{1}{2}$ "	11"	10 lbs.
12	4 $\frac{3}{4}$ "	12"	12 lbs.

Plain Smooth Casting.



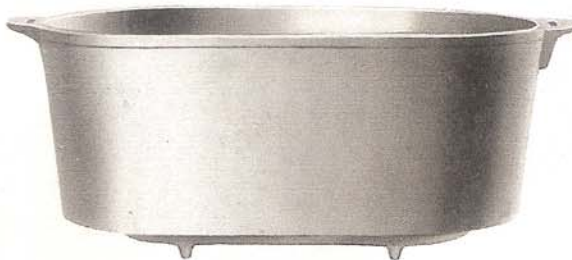
SHALLOW CAMP OVEN WITH LEGS

For fire place or open air cooking

SPECIFICATIONS

No.	Depth	Diameter	Average Wt. Each
9	2 $\frac{1}{2}$ "	9"	4 $\frac{1}{4}$ lbs.
10	2 $\frac{1}{2}$ "	10"	5 $\frac{1}{2}$ lbs.
11	2 $\frac{3}{4}$ "	11"	6 $\frac{1}{2}$ lbs.
12	3"	12"	9 $\frac{1}{3}$ lbs.
13	3"	13"	12 $\frac{1}{2}$ lbs.

Plain Smooth Casting.



HAM BOILER

SPECIFICATIONS

No.	Capacity	Size	Average Wt. Each
7	21 Qts.	8 $\frac{7}{8}$ x11 $\frac{1}{8}$ x22 $\frac{1}{2}$ "	22 lbs.
8	25 Qts.	9 x11 $\frac{3}{8}$ x24"	30 lbs.

Furnished in plain finish only.



CAMP LEG SKILLET WITH LONG HANDLE

For fire place or open air cooking

SPECIFICATIONS

No.	Length of Handle	Diameter	Depth	Average Wt. Ea.
9	7 $\frac{1}{2}$ "	9"	2 $\frac{1}{4}$ "	4 $\frac{1}{2}$ lbs.
10	8 $\frac{1}{2}$ "	10"	2 $\frac{3}{8}$ "	5 $\frac{1}{2}$ lbs.
11	9 $\frac{1}{4}$ "	11"	2 $\frac{3}{8}$ "	6 $\frac{1}{2}$ lbs.
12	10 $\frac{1}{2}$ "	12"	2 $\frac{3}{4}$ "	7 $\frac{1}{2}$ lbs.
13	11 $\frac{1}{2}$ "	13"	2 $\frac{3}{4}$ "	10 $\frac{1}{2}$ lbs.
14	12 $\frac{1}{2}$ "	14"	2 $\frac{3}{4}$ "	11 lbs.

Plain Smooth Casting.



RIMMED LID

FOR

CAMP OVEN AND SKILLET

SPECIFICATIONS

No.	Diameter	Average Wt. Each
9	9"	4 lbs.
10	10"	5 lbs.
11	11"	5 $\frac{1}{2}$ lbs.
12	12"	7 $\frac{1}{2}$ lbs.
13	13"	8 $\frac{1}{3}$ lbs.
14	14"	9 $\frac{1}{3}$ lbs.

Plain Smooth Casting.

*All Red Mountain Hollowware
made from Pure Pig Iron*

"Builders of the South's Finest