



Manufactured By

BIRMINGHAM STOVE & RANGE CO.

Birmingham 2, Alabama

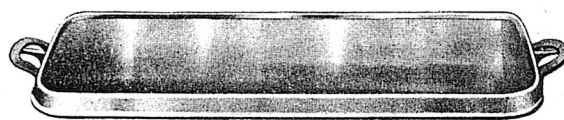
"Builders of Fine Stoves for over 50 years"



DEEP SKILLET OR CHICKEN FRYER

With low cover
SPECIFICATIONS

No.	Depth	Top Diameter	Average Wt. Per Dozen
8	3"	10 5/8"	130 lbs.



LONG FLAT BOTTOM GRIDDLE

SPECIFICATIONS

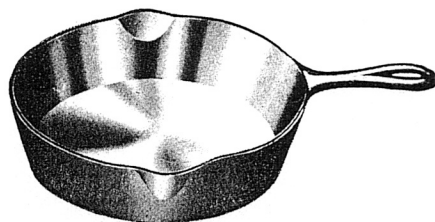
No.	Size	Average Wt. Per Dozen
8	9 x 19"	108
9	10 3/16 x 21 7/16"	120



DUTCH OVEN WITH LOW COVER

SPECIFICATIONS

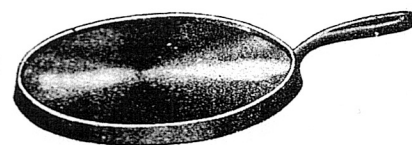
No.	Depth	Capacity	Top Diameter	Average Wt. Per Dozen
8	4"	5 qts.	10 5/8"	146 lbs.
12	7"	12 qts.	13 3/8"	240 lbs.



REGULAR SKILLET

SPECIFICATIONS

No.	Depth	Top Diameter	Average Wt. Per Dozen
3	1 9/16"	6 5/8"	24 lbs.
5	1 3/4"	8"	36 lbs.
7	2"	9 11/16"	54 lbs.
8	2"	10 5/8"	60 lbs.
10	2 1/8"	12 7/16"	84 lbs.
14	2 1/4"	15 3/8"	120 lbs.

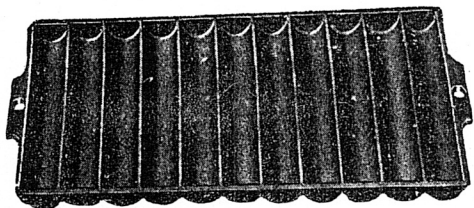


HANDLED GRIDDLE

Raised bottom to allow heat circulation

SPECIFICATIONS

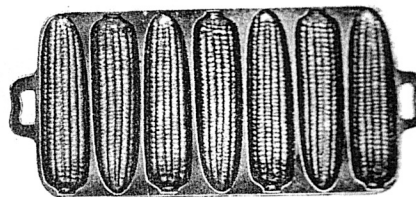
No.	Diameter	Average Wt. Per Dozen
8	9 1/8"	46 lbs.



BREAD STICK PAN

SPECIFICATIONS

No.	Size of Pan Overall	Size of Stick	Average Wt. Per Dozen
11	6 5/8 x 12"	6 1/4 x 1"	66 lbs.



CORN COB PAN

SPECIFICATIONS

No.	Size of Pan Overall	Size of Cob	Average Wt. Per Dozen
7-S	5 1/2 x 12 3/4"	1 3/4 x 5 1/4"	42 lbs.



COMMON FLAT BOTTOM STOVE POT

With Bail

SPECIFICATIONS

No.	Depth	Capacity	Top Diameter	Average Wt. Per Dozen
8	6 1/2"	8 qts.	9 5/8"	108 lbs.



STEW PAN

With Low Cover

SPECIFICATIONS

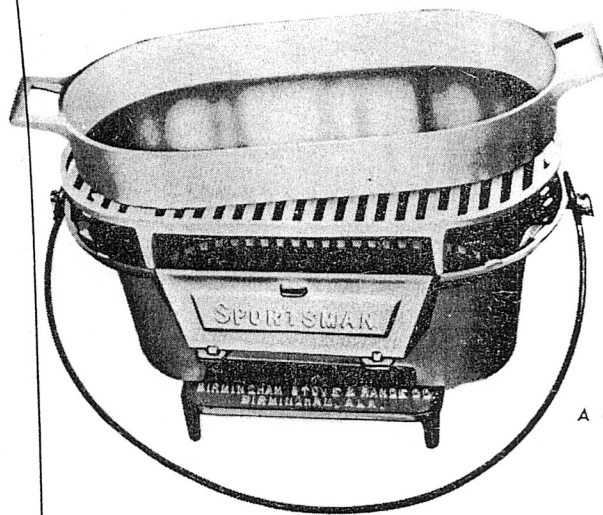
No.	Capacity	Top Diameter	Average Wt. Per Dozen
2	2 qts.	8"	70 lbs.
3	3 qts.	8 7/8"	108 lbs.



STOVE GRIDDLE

SPECIFICATIONS

No.	Diameter	Average Wt. Per Dozen
8	9 3/4"	42 lbs.



SPORTSMAN OUTDOOR COOKER

Look What It Offers!

- * Fish Fryer, 16 7/8" x 8 5/8" x 2"
- * Grill, 17 1/2" x 8 7/8"
- * Overall-Length 18 7/8" -- Width 10 1/2"
- * Cast Iron Grate (For Charcoal or Wood)
- * Made From Durable New Pig Iron
- * Well Packed in Strong Carton -- Total 40 lbs.

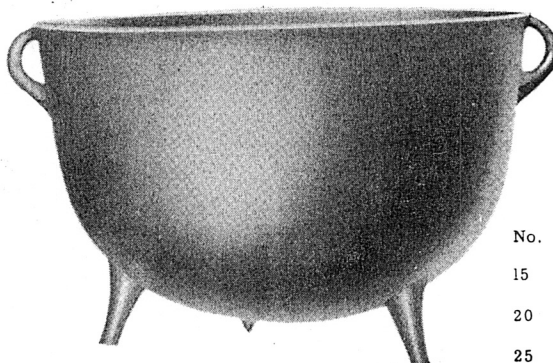
A Useful and Unique Item for Home or Camp to Build
Sales Volume for You

CAMP LEG SKILLET WITH LONG HANDLE AND DEEP LID

For fire place or open air cooking

SPECIFICATIONS

No.	Length of Handle	Diameter	Depth	Average Wt. Ea.
12	10 1/2"	12"	2 3/4"	15 lbs.



SUGAR KETTLE

SPECIFICATIONS

No.	Depth	Actual Capacity	Top Diameter	Average Wt. Ea.
15	12 1/2"	12.50 gals.	20 5/8"	48 lbs.
20	13 1/2"	16.00 gals.	21 5/8"	60 lbs.
25	14 1/2"	21.00 gals.	24"	70 lbs.
30	15 7/8"	23.00 gals.	25 1/2"	80 lbs.
35	16 1/4"	30.00 gals.	26 5/8"	85 lbs.

Redi-Aged
CAST IRON COOKWARE

0 lbs.

Build

		PLAIN FINISH	Per Bundle	AA FINISH (POLISHED)	Per Carton
#3	Skillet	.34	6	.49	6
#5	Skillet	.51	6	.66	6
#7	Skillet	.66	6	.89	6
#8	Skillet	.71	6	.99	6
#10	Skillet	1.13	6	1.43	3
#14	Skillet	2.29	6	2.94	2
#11	Bread Stick Pan	.83	6		
#7-S	Corn Cob Pan	.61	6		
#8	Dutch Oven with Cover	1.81	6	2.31	4
#12	Dutch Oven with Cover	4.03			
#2	Stew Pan with Cover	1.10	6		
#3	Stew Pan with Cover	1.59	6		
#8	Chicken Fryer with Cover	1.66	6	2.04	4
#8	Handled Griddle	.71	6	.89	6
#8	Stove Griddle	.65	6		
#8	Long Flat Bottom Griddle	2.13			
#9	Long Flat Bottom Griddle	2.43			
#8	Flat Bottom Stove Pot	1.36			
#12	Camp Leg Skillet with Lid	2.71			
#15	Sugar Kettle	5.79			
#20	Sugar Kettle	7.54			
#25	Sugar Kettle	8.90			
#30	Sugar Kettle	10.05			
#35	Sugar Kettle	11.79			
	SPORTSMAN Outdoor Cooker	7.45			

FREIGHT ALLOWANCE
50c PER 100 LBS.

WEST OF MISSISSIPPI RIVER, ALSO
NORTH OF OHIO AND POTOMAC RIVERS.

Terms: 1% 10 days, net 30 days
fob Birmingham, Ala.

Manufactured by
BIRMINGHAM STOVE & RANGE CO.
Birmingham, Ala.

11/10/54

Average
Wt. Ea.

48 lbs.

60 lbs.

70 lbs.

80 lbs.

85 lbs.

A-5

Redi-Aged
CAST IRON COOKWARE

		<u>PLAIN FINISH</u>	<u>Per Bundle</u>	<u>AA FINISH (POLISHED)</u>	<u>Per Carton</u>
#3	Skillet	.27	6	.39	6
#5	Skillet	.41	6	.53	6
#7	Skillet	.53	6	.71	6
#8	Skillet	.57	6	.79	6
#10	Skillet	.90	6	1.14	3
#14	Skillet	1.83	6	2.35	2
#11	Bread Stick Pan	.66	6		
#7-S	Corn Cob Pan	.49	6		
#8	Dutch Oven with Cover	1.45	6	1.85	4
#12	Dutch Oven with Cover	3.22			
#2	Stew Pan with Cover	.88	6		
#3	Stew Pan with Cover	1.27	6		
#8	Chicken Fryer with Cover	1.33	6	1.63	4
#8	Handled Griddle	.57	6	.71	6
#8	Stove Griddle	.52	6		
#8	Long Flat Bottom Griddle	1.70			
#9	Long Flat Bottom Griddle	1.94			
#8	Flat Bottom Stove Pot	1.09			
#12	Camp Leg Skillet with Lid	2.17			
#15	Sugar Kettle	4.63			
#20	Sugar Kettle	6.03			
#25	Sugar Kettle	7.12			
#30	Sugar Kettle	8.04			
#35	Sugar Kettle	9.43			
	SPORTSMAN Outdoor Cooker	5.96			

FREIGHT ALLOWANCE
50c PER 100 LBS.

WEST OF MISSISSIPPI RIVER, ALSO
NORTH OF OHIO AND POTOMAC RIVERS.

Terms: 1% 10 days, net 30 days
fob Birmingham, Ala.

Manufactured by
BIRMINGHAM STOVE & RANGE CO.
Birmingham, Ala.

11/10/54 (Legitimate jobbers or distributors)

A-6