



ATLANTA STOVE WORKS

ATLANTA, GEORGIA



ATLANTA LINE  
*of*  
STOVES AND RANGES

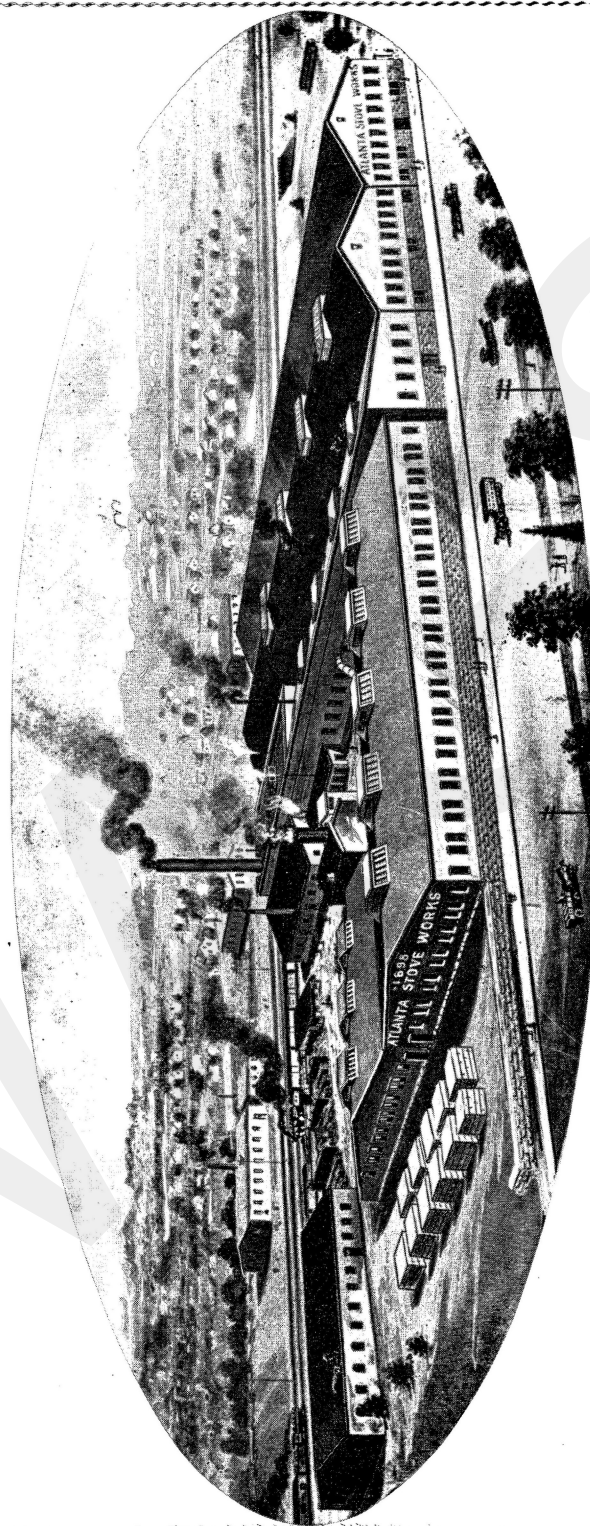
*Supplementary Catalog No. 32*



ATLANTA STOVE WORKS

*Manufacturers*

ATLANTA, GEORGIA



*Factory of*  
**ATLANTA STOVE WORKS**  
CORNER IRWIN AND KROG STREETS AND SOUTHERN RAILWAY  
ATLANTA, GEORGIA



## FOREWORD

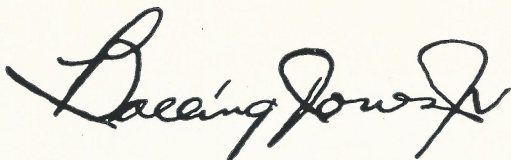
**I**N order that you may note entirely new models and improvements on old models made since our last catalogue was issued we would appreciate your careful inspection of this book. We have now the longest line and the most complete assortment of kinds and sizes of any factory we know of and we feel sure that you will take great pride with us in the new ATLANTA LINE.

Our forty years of stove building has given us the experience necessary to furnish you with a quality line unequalled in the South. The workmanship is superior as we are one of the few remaining factories employing white skilled labor in all departments. The quality is superior as we melt nothing but carefully analyzed pig iron with carefully analyzed coke, and use the finest grade of molding sand available. We use only original patterns designed by our own pattern makers which guarantees you perfect castings, perfect fit, and perfect designing for efficient operation. We do our own nickeling, cleaning, assembling, casting, pattern molding, pattern making, make our own sheet metal parts, all of which departments are under our constant supervision.

It has always been our policy to give you new models when we are convinced that there is a demand for such new models from the consumer, and that you need them to take care of your trade. We are constantly on the alert to make any and all improvements possible and you may continue to depend entirely upon us to furnish you with as up-to-date and modern a line as can be had.

We attribute the growth of this company to a commanding position in the industry and the success of our customers in their stove departments to the fact that we have rigidly followed the above policies and principles for forty years.

ATLANTA STOVE WORKS

A stylized, handwritten signature in black ink, appearing to read "L. J. Jones". The signature is fluid and cursive, with a large initial "L" and a prominent "J".

President and General Manager



STOVE HOLLOW WARE  
ENGLISH POTS  
SUGAR KETTLES  
COUNTRY HOLLOW WARE

*Smooth and Clean*  
NATIONAL STANDARD LIST



*Discount on Application*



Made of Same Iron as our Stoves and Ranges  
Absolutely No Scrap Used



## Stove Hollow Ware



STOVE SPIDERS

(Lacquered to prevent rust)

Smooth Bottoms and Tops; No Gate marks; Clean and Attractive Castings.

No.	Weight	List
7	3 $\frac{1}{4}$ lbs.	\$ .30
8	4 $\frac{1}{4}$ lbs.	.35
9	4 $\frac{3}{4}$ lbs.	.40



STOVE GRIDDLES

(Lacquered to prevent rust)

Smooth Bottoms and Tops; No Gate marks; Clean and Attractive Castings.

No.	Weight	List
7	2 $\frac{1}{4}$ lbs.	\$ .25
8	3 $\frac{1}{4}$ lbs.	.27
9	3 $\frac{3}{4}$ lbs.	.30



STRAIGHT STOVE POTS

ROUND OR FLAT BOTTOM

(Specify which when ordering)

(Varnished on the outside; smooth and clean on inside)

No.	Capacity	Weight	List
7	6 qts.	6 $\frac{1}{4}$ lbs.	\$ .65
8	8 qts.	8 lbs.	.70
9	11 qts.	10 lbs.	.85

Round Shipped Unless Flat Specified



BULGED STOVE POTS

(Varnished on the outside; smooth and clean on inside)

No.	Capacity	Weight	List
7	8 qts.	8 lbs.	\$ .75
8	10 qts.	9 $\frac{1}{2}$ lbs.	.85

Made of Pure Pig Iron. No Scrap Used.



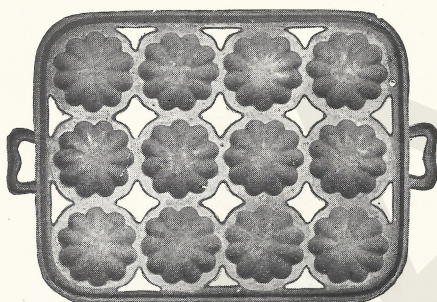
# ATLANTA LINE of STOVES AND RANGES



## TEAKETTLES

(Varnished on outside; smooth and clean on inside)

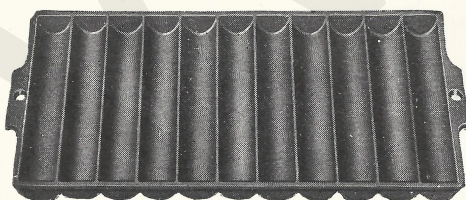
No.	Weight	Capacity	List
7	8 lbs.	5 qts.	\$ .80
8	9 lbs.	6 qts.	.90
9	11 lbs.	7 qts.	1.00



## GEM MUFFIN PANS

(Smooth and clean)

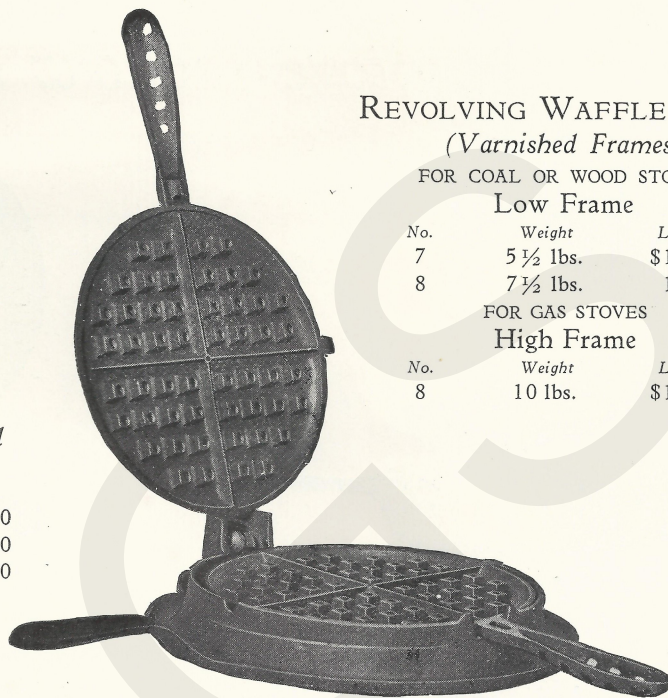
No.	Weight per doz.	Size	List per doz.
1	36 lbs.	6-hole	\$ 6.00
2	70 lbs.	12-hole	10.00



## BREAD STICK PANS

(Smooth and clean)

Weight per doz.	List per doz.
60 lbs.	\$6.60



## REVOLVING WAFFLE IRONS

(Varnished Frames)

FOR COAL OR WOOD STOVES

### Low Frame

No.	Weight	List
7	5 1/2 lbs.	\$1.00
8	7 1/2 lbs.	1.25

FOR GAS STOVES

### High Frame

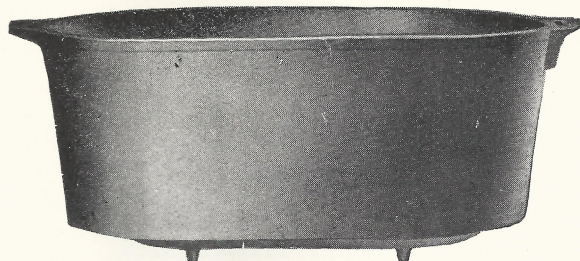
No.	Weight	List
8	10 lbs.	\$1.75



## LONG PANS, OR FISH FRYERS

(Smooth and clean)

No.	Weight	List
7	5 lbs.	\$ .55
8	7 lbs.	.65



## IRON HAM BOILERS

(Varnished on outside; smooth and clean on inside)

No.	Weight	List
7	20 lbs.	\$1.90
8	30 lbs.	2.25
9	40 lbs.	2.50

Made of Pure Pig Iron. No Scrap Used.



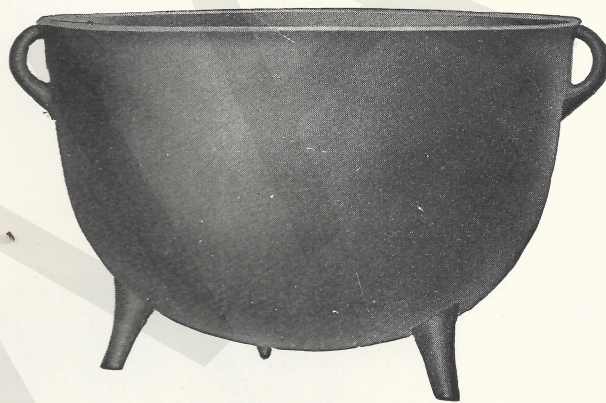
# RESULT of OVER 40 YEARS of KNOWING HOW



## ENGLISH POTS

*Actual Capacity largest in the South. Smoothest inside and outside.  
Thoroughly cleaned and varnished.*

No.	Actual Capacity	Weight	No.	Actual Capacity	Weight
1	1.00 gals.	6 lbs.	15	13.75 gals.	45 lbs.
8	7.32 gals.	25 lbs.	18	16.00 gals.	51 lbs.
10	9.25 gals.	30 lbs.	20	18.63 gals.	55 lbs.
12	12.00 gals.	36 lbs.			



## SUGAR KETTLES

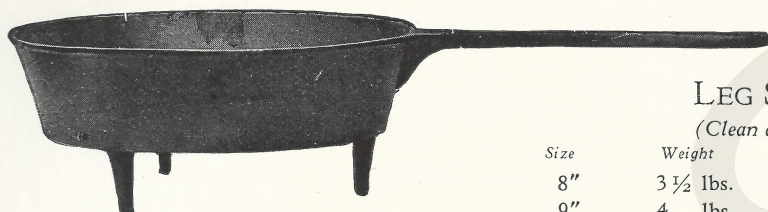
*Actual Capacity largest in the South. Smoothest inside and outside.  
Thoroughly cleaned and varnished. Made with stop-lugs to prevent wedging.*

No.	Actual Capacity	Weight	No.	Actual Capacity	Weight
8	6 $\frac{1}{8}$ gals.	22 lbs.	20	16 gals.	41 lbs.
10	8 $\frac{1}{4}$ gals.	24 lbs.	25	21 gals.	54 lbs.
12	10 gals.	27 lbs.	30	23 gals.	70 lbs.
15	12 $\frac{1}{2}$ gals.	34 lbs.	35	30 gals.	84 lbs.

Made of Pure Pig Iron. No Scrap Used. Above can be furnished with Bails if desired at extra charge. For prices on above see Net Price Sheet.



# Country Hollow Ware



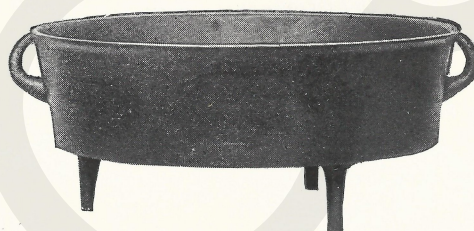
## LEG SKILLETS (Clean and Smooth)

Size	Weight	Size	Weight
8"	3 ½ lbs.	12"	8 ½ lbs.
9"	4 lbs.	13"	10 lbs.
10"	5 lbs.	14"	11 ½ lbs.
11"	7 lbs.		

## SHALLOW OVENS

(Clean and Smooth)

Size	Weight
9"	4 ½ lbs.
10"	6 lbs.
11"	7 lbs.
12"	8 lbs.
13"	10 lbs.



## DEEP OVENS

(Clean and Smooth)

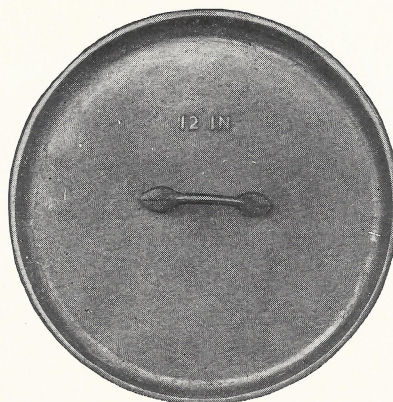
Size	Weight
9"	7 lbs.
10"	8 lbs.
11"	10 lbs.
12"	12 lbs.

## LIDS

(Clean and Smooth)

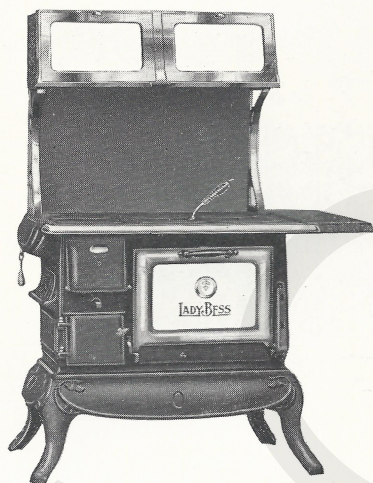
FOR SKILLETS AND OVENS

Size	Weight
8"	3 lbs.
9"	4 lbs.
10"	5 lbs.
11"	6 lbs.
12"	7 ½ lbs.
13"	8 ½ lbs.
14"	9 ½ lbs.



Made of Pure Pig Iron. No Scrap Used.





STYLE 3—MINIATURE LADY BESS RANGE—*Plain Finish*

FOR COAL OR WOOD

*With Closet*

(Two Joints of Pipe Furnished with Every Stove)

No.	Size of Pipe	Size of Covers	Size of Top Overall	Size of Oven	Height to Cooking Top	Shipping Weight
Baby	2"	6-2 5/8"	13 1/4"x8 3/4"	6"x5 3/4"x3 1/2"	9 1/4"	35 lbs.

*Will Cook Exactly Like the Big Lady Bess*

Has Slide Regulating Damper; Pouch Door for Coal, Drop Feed Door for Wood; Flat Dump Grate; Pipe Behind Closet; White Enameled Oven Door with Accurate Thermometer; Aluminized Oven; Nickeled Oven Door Frame, Towel Rail and Handles; Heavy Gauge Polished Steel High Closet with White Porcelain Double Drop Doors, all Nickel Finish. This stove is an exact reproduction of our regular Lady Bess Range on a much smaller scale. The finest built toy range made and can be used as salesman's sample.