

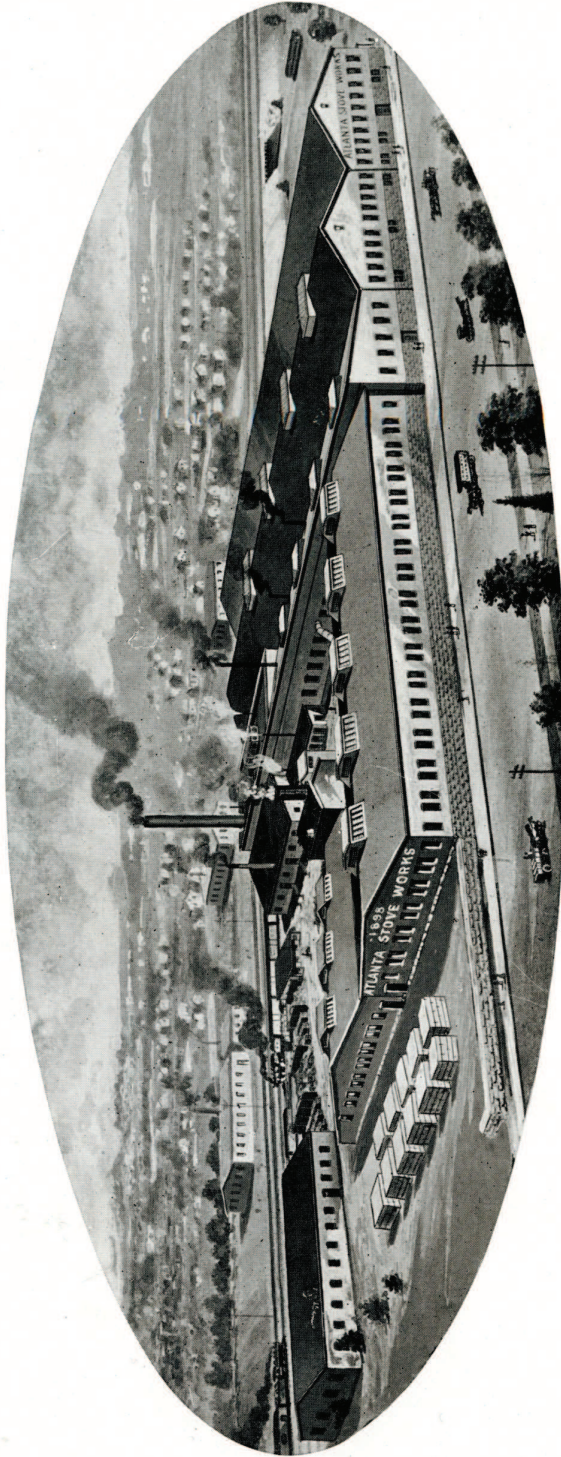
50



90

ATLANTA STOVE WORKS
ATLANTA, GEORGIA

156



Factory of
ATLANTA STOVE WORKS
CORNER IRWIN AND KROG STREETS AND SOUTHERN RAILWAY
ATLANTA, GEORGIA

ATLANTA
Line of
STOVES AND RANGES

Supplementary Catalog No. 34



ATLANTA STOVE WORKS

Manufacturers

ATLANTA, GEORGIA

FOREWORD

IN order that you may note entirely new models and improvements on old models made since our last catalogue was issued we would appreciate your careful inspection of this book. We have now the longest line and the most complete assortment of kinds and sizes of any factory we know of and we feel sure that you will take great pride with us in the new **ATLANTA** LINE.

Our forty years of stove building has given us the experience necessary to furnish you with a quality line unequalled in the South. The workmanship is superior as we are one of the few remaining factories employing white skilled labor in all departments. The quality is superior as we melt nothing but carefully analyzed pig iron with carefully analyzed coke, and use the finest grade of molding sand available. We use only original patterns designed by our own pattern makers which guarantees you perfect castings, perfect fit, and perfect designing for efficient operation. We do our own nickeling, cleaning, assembling, casting, pattern molding, pattern making, make our own sheet metal parts, all of which departments are under our constant supervision.

It has always been our policy to give you new models when we are convinced that there is a demand for such new models from the consumer, and that you need them to take care of your trade. We are constantly on the alert to make any and all improvements possible and you may continue to depend entirely upon us to furnish you with as up-to-date and modern a line as can be had.

We attribute the growth of this company to a commanding position in the industry and the success of our customers in their stove departments to the fact that we have rigidly followed the above policies and principles for forty years.

ATLANTA STOVE WORKS



President and General Manager



ATLANTA MINIATURE LADY BESS RANGE

FOR COAL OR WOOD

STYLE 3—*With Closet*

(Four Joints of Pipe Furnished with Every Stove)

No.	Size of Pipe	Size of Covers	Size of Top Overall	Size of Oven	Height to Cooking Top	Shipping Weight
Baby	2"	6-2 $\frac{5}{8}$ "	13 $\frac{1}{4}$ "x8 $\frac{3}{4}$ "	6"x5 $\frac{3}{4}$ "x3 $\frac{1}{2}$ "	9 $\frac{1}{4}$ "	35 lbs.

Will Cook Exactly Like the Big Lady Bess

Has Slide Regulating Damper; Pouch Door for Coal, Drop Feed Door for Wood; Flat Dump Grate; Pipe Behind Closet; White Enameled Oven Door with Accurate Thermometer; Aluminized Oven; Nickered Oven Door Frame, Towel Rail and Handles; Heavy Gauge Polished Steel High Closet with White Porcelain Double Drop Doors, all Nickel Finish. This stove is an exact reproduction of our regular Lady Bess Range on a much smaller scale. The finest built toy range made and can be used as salesman's sample.

ATLANTA
Line of
CAST IRON COOKING WARE
ENGLISH POTS - - SUGAR KETTLES



Discount on Application

Made of Same Iron as our Stoves and Ranges
Absolutely No Scrap Used

DEEP SKILLET OR CHICKEN FRYER WITH LOW COVER

1938 Prices

RESULT OF
OVER 40 YEARS
OF KNOWING HOW

No.	Av. Wt. Per Doz.	Top Diameter	Depth	Ground Polished	Plain
7	112 lbs.	9 1/8"	3"	\$1.58	\$1.34
8	132 lbs.	10 5/8"	3"	1.70	1.46



COVERS

Size for size interchangeable on Dutch Ovens, Regular Skillets, Deep Skillets and Flat Bottom Pots

No.	Low Cover Plain	High Cover Plain
6	\$.52	\$.62
7	.60	.76
8	.72	.90
9	.82	1.04
10	1.00	1.30
12	1.16	1.70

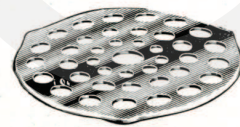
DEEP SKILLET OR CHICKEN FRYER

No.	Av. Wt. Per Doz.	Top Diameter	Depth	Ground Double Polished	Ground Polished	Plain
7	70 lbs.	9 1/8"	3"	\$1.62	\$1.40	\$1.00
8	72 lbs.	10 5/8"	3"	1.94	1.68	1.20
9	84 lbs.	11 7/8"	3"	2.10	1.82	1.30
10	115 lbs.	12 1/8"	3"	2.58	2.32	1.60

Covers to fit all above. Above prices do not include Covers

TRIVETS

To fit all sizes Dutch Ovens



No.	List Price
6-7	\$.30
8-9	.32
10-12	.38



DUTCH OVENS

Covers and trivets illustrated on this page extra

No.	Av. Wt. Per Doz.	Top Diameter	Depth	Ground Double Polished	Ground Polished	Plain
6	65 lbs.	8 1/8"	3 5/8"	\$1.92	\$1.66	\$1.18
7	72 lbs.	9 1/8"	3 3/4"	2.00	1.74	1.24
8	84 lbs.	10 5/8"	4"	2.18	1.90	1.36
9	108 lbs.	11 7/8"	4 1/4"	2.76	2.40	1.72
10	130 lbs.	12 1/8"	4 7/8"	3.80	3.30	2.36
12	148 lbs.	13 3/8"	7"	6.60	5.74	4.10



REGULAR SKILLETS

No.	Av. Wt. Per Doz.	Top Diameter	Depth	Ground Double Polished	Ground Polished	Plain
3	21 lbs.	6 5/8"	1 1/4"	\$.50	\$.44	\$.36
4	27 lbs.	7 1/8"	1 1/2"	.62	.56	.40
5	36 lbs.	8"	1 3/4"	.76	.66	.42
6	42 lbs.	8 1/8"	1 7/8"	.82	.72	.48
7	50 lbs.	9 1/8"	2"	.92	.80	.56
8	69 lbs.	10 5/8"	2"	1.04	.90	.66
9	74 lbs.	11 1/8"	2"	1.26	1.10	.80
10	79 lbs.	12 1/8"	2 3/8"	1.66	1.44	1.06
12	82 lbs.	13 3/8"	2 1/4"	2.10	1.82	1.36
14	104 lbs.	15 3/8"	2 1/4"	2.70	2.34	1.76

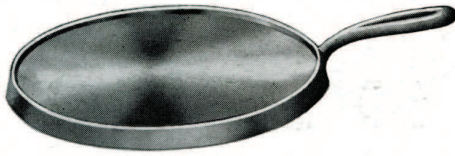
Sizes Nos. 6 to 12, inclusive, can be used in connection with Dutch Oven covers

DUTCH OVENS WITH LOW COVERS

No.	Av. Wt. Per Doz.	Top Diameter	Depth	Ground Polished	Plain
7	114 lbs.	9 1/8"	3 3/4"	\$1.82	\$1.54
8	144 lbs.	10 5/8"	4"	1.88	1.66
9	168 lbs.	11 7/8"	4 1/4"	2.14	1.90
10	202 lbs.	12 1/8"	4 7/8"	3.50	2.76

{ 127 }

1938 Prices



HANDLED GRIDDLES

Raised bottoms to allow perfect heat circulation

No.	Average Weight Per Doz.	Diameter	Ground Double Polished	Ground Polished	Plain
6	28 lbs.	7 1/4"	\$.70	\$.60	\$.38
7	42 lbs.	8"	.74	.64	.42
8	46 lbs.	9 1/8"	.82	.72	.48
9	54 lbs.	10 1/2"	.96	.84	.56
10	66 lbs.	11 1/2"	1.10	.96	.66



COMBINATION DUTCH OVEN, DOUBLE BOILER

The most useful and economical of all cooking utensils

Cover can be used on either of the other two vessels separately or in combination

No.	Plain	Ground Polished
7 Combination	\$3.62	\$4.82
8 Combination	4.02	5.34
9 Combination	4.66	6.20



BAILED GRIDDLES

With self-locking bail and raised bottom

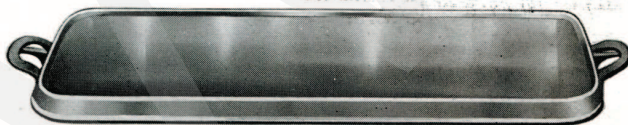
No.	Average Weight Per Doz.	Diameter	Ground Double Polished	Ground Polished	Plain
12	60 lbs.	11 1/2"	\$1.38	\$1.26	\$.90
14	84 lbs.	13 3/4"	1.84	1.68	1.20
16	108 lbs.	15 1/2"	2.32	2.10	1.50



FLAT BOTTOM STOVE KETTLES WITH BAIL AND TILTING RING

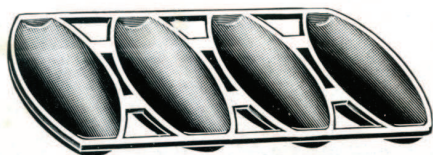
No.	Average Weight Each	Top Diameter	Plain	Ground and Polished
7	10 lbs.	9 1/8"	\$1.66	\$2.32
8	12 lbs.	10 5/8"	1.86	2.60
9	13 lbs.	11 7/8"	2.30	3.22

Covers can be used with all sizes listed above



LONG FLAT BOTTOM GRIDDLES

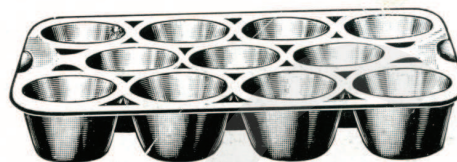
No.	Average Weight Each	Size	Plain
8	9 lbs.	9" x 19"	\$1.50
9	11 lbs.	10 3/8" x 21 1/8"	1.76
10	15 lbs.	12 1/2" x 24 1/8"	2.38



VIENNA BREAD PANS

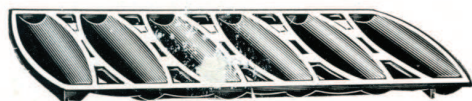
Plain smooth casting

No.	Average Weight per Doz.	Size Pan	Size Loaf	List Price
4	40 lbs.	6 1/2" x 12 1/2"	6" x 2 1/2" x 1 1/4"	\$.76



POP OVER PANS
Plain smooth casting

No.	Average Weight per Doz.	Size Pan	List Price
11	59 lbs.	7 3/8" x 10 1/8"	\$1.04



VIENNA ROLL PANS

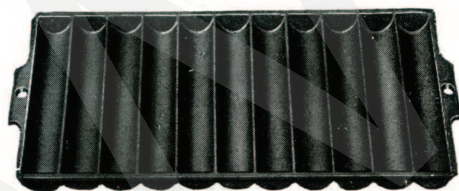
Plain smooth casting

No.	Average Weight per Doz.	Size Pan	Size Loaf	List Price
6	40 lbs.	6 1/2" x 12"	6" x 1 5/8"	\$.74



GEM MUFFIN PANS
Plain smooth casting

No.	Average Weight per Doz.	Size Pan	List Price
12	76 lbs.	10 3/8" x 13 3/8"	\$1.50
6	48 lbs.	7 1/8" x 10 3/8"	1.00



BREAD STICK PANS

Plain smooth casting

No.	Average Weight per Doz.	Size Pan	List Price
11	66 lbs.	6 5/8" x 12"	\$1.00
5	30 lbs.	6 5/8" x 5 5/8"	.56

REVOLVING WAFFLE IRONS

(Varnished frames)
FOR COAL OR WOOD STOVES

No.	Weight	List
7	5 1/2 lbs.	\$1.16
8	7 1/2 lbs.	1.38

FOR GAS STOVES

No.	Weight	List
8	10 lbs.	\$1.76





STOVE SPIDERS

Lacquered

Smooth surfaces inside and out. No gate marks. Clean and attractive castings

No.	Av. Wt. Each	Top Diameter	Depth	List Price
7	3½ lbs.	9½"	1⅞"	\$.56
8	4 lbs.	10"	1⅞"	.66
9	5 lbs.	11⅝"	2"	.80

STOVE GRIDDLES

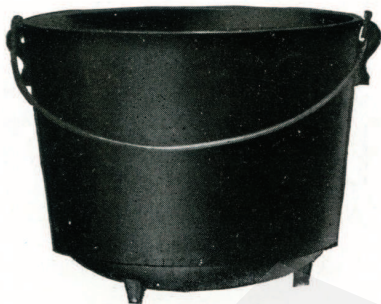
Lacquered

Smooth surfaces inside and out. No gate marks. Clean and attractive castings

No.	Av. Wt. Each	Diameter	List Price
7	2¼ lbs.	8⅝"	\$.42
8	3 lbs.	9¾"	.48
9	3½ lbs.	10¾"	.56

Original Prices Not Visible

1938 Prices

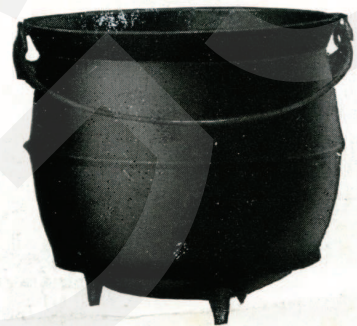


STRAIGHT POTS

Plain smooth castings
Varnished on outside

Can Furnish No. 8 with Flat Bottom

No.	Av. Wt. Each	Top Diameter	Depth	Capacity	List Price
7	8 lbs.	9½"	7⅞"	6 qts.	\$1.10
8	9½ lbs.	10¼"	7⅞"	8 qts.	1.20
9	11 lbs.	11"	8½"	11 qts.	1.50



SOUTHERN BULGED STOVE POTS
WITH BAIL

Plain smooth castings
Varnished on outside

No.	Av. Wt. Each	Capacity	List Price
7	8½ lbs.	8 qts.	\$1.40
8	10 lbs.	10 qts.	1.60



CAST TEA KETTLES

Varnished on outside

No.	Av. Wt. Each	Quart Capacity	List Price
7	9 lbs.	4½ qts.	\$1.36
8	10½ lbs.	6 qts.	1.50
9	11½ lbs.	7½ qts.	1.70



SHALLOW CAMP OVEN WITH LEGS

For fire place or open air cooking

Plain smooth casting

No.	Av. Wt. Each	Diameter	Depth	List Price
9	4 1/8 lbs.	9"	2 1/2"	\$.60
10	5 1/3 lbs.	10"	2 1/2"	.78
11	6 1/2 lbs.	11"	2 3/4"	.94
12	9 1/3 lbs.	12"	3"	1.36
13	12 1/2 lbs.	13"	3"	1.82



DEEP CAMP OVEN WITH LEGS

For fire place or open air cooking

Plain smooth casting

No.	Av. Wt. Each	Diameter	Depth	List Price
9	7 lbs.	9"	4 1/8"	\$1.02
10	8 lbs.	10"	4 1/4"	1.16
11	10 lbs.	11"	4 1/2"	1.46
12	12 lbs.	12"	4 3/4"	1.74



CAMP LEG SKILLET, LONG HANDLE

For fire place or open air cooking

Plain smooth casting

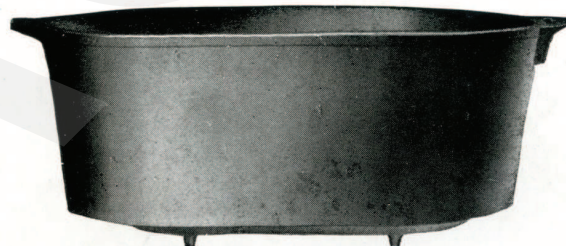
No.	Av. Wt. Each	Diameter	Depth	Length of Handle	List Price
8	3 1/2 lbs.	8"	1 7/8"	6 1/2"	\$.50
9	4 1/3 lbs.	9"	2 1/4"	7 1/2"	.62
10	5 1/3 lbs.	10"	2 3/8"	8 1/2"	.78
11	6 1/2 lbs.	11"	2 3/8"	9 1/4"	.94
12	7 1/2 lbs.	12"	2 3/4"	10 1/2"	1.08
13	10 1/2 lbs.	13"	2 3/4"	11 1/2"	1.52
14	11 lbs.	14"	2 3/4"	12 1/2"	1.60



RIMMED LIDS
FOR CAMP OVENS AND SKILLETS

Plain smooth casting

No.	Av. Wt. Each	Diameter	List Price
8	2 5/8 lbs.	8"	\$.42
9	4 lbs.	9"	.58
10	5 lbs.	10"	.72
11	5 1/2 lbs.	11"	.80
12	7 1/2 lbs.	12"	1.08
13	8 1/3 lbs.	13"	1.20
14	9 1/3 lbs.	14"	1.36



HAM BOILERS

Varnished on outside

No.	Av. Wt. Each	Size	List Price
7	20 lbs.	8 7/8" x 11 1/8" x 22 1/2"	\$3.12
8	29 lbs.	9" x 11 3/8" x 24"	3.76



LONG PAN, OR FISH FRYER

Plain smooth casting

No.	Av. Wt. Each	Size	List Price
7	5 lbs.	8 1/4" x 19 3/8"	\$1.06
8	7 lbs.	9 1/4" x 21 1/4"	1.30



Original Prices Not Visible

After 1941 Prices

ENGLISH POTS

Actual Capacity largest in the South. Smoothest inside and outside.
Thoroughly cleaned and varnished.

No.	Actual Capacity	Weight	List Price	No.	Actual Capacity	Weight	List Price
1	1.00 gals.	6 lbs.	\$1.80	15	13.75 gals.	55 lbs.	\$8.36
8	7.32 gals.	27 lbs.	4.40	18	16.00 gals.	60 lbs.	10.06
10	9.25 gals.	37 lbs.	5.76	20	18.63 gals.	63 lbs.	11.82
12	12.00 gals.	43 lbs.	7.10				



Original Prices Not Visible

After 1941 Prices

SUGAR KETTLES

Actual Capacity largest in the South. Smoothest inside and outside.
Thoroughly cleaned and varnished. Made with stop-lugs to prevent wedging.

No.	Actual Capacity	Weight	List Price	No.	Actual Capacity	Weight	List Price
8	6 ¼ gals.	29 lbs.	\$3.50	20	16 gals.	62 lbs.	\$7.50
10	8 ¼ gals.	36 lbs.	4.12	25	21 gals.	79 lbs.	9.88
12	10 gals.	43 lbs.	5.00	30	23 gals.	85 lbs.	13.26
15	12 ½ gals.	44 lbs.	5.88	35	30 gals.	93 lbs.	15.00

Made of Pure Pig Iron. No Scrap Used. Above can be furnished with Bails if
desired at extra charge.

PORTABLE BASKETS
PLATED GRATE SETS
PLAIN VARNISHED GRATE SETS
PLAIN BASKETS
ADJUSTABLE BASKETS
GRATE PARTS
DOG IRONS
WALL VENTS---ASH DUMPS
ASH MOUTHS



STANDARD LIST

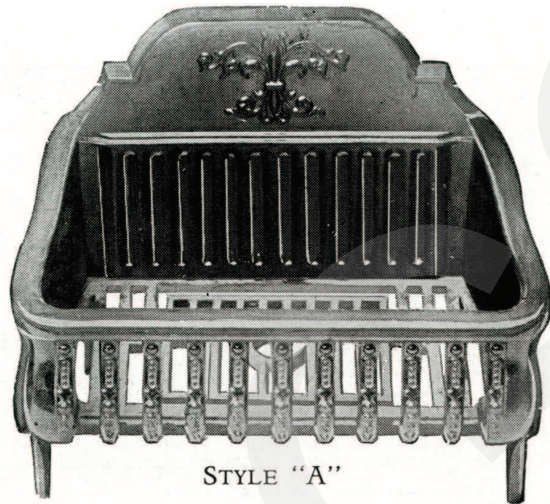


Prices Quoted on Application



Made of Same Iron as Our Stoves and Ranges
Absolutely No Scrap Used

Portable Baskets



STYLE "A"

Black Varnish Finish. With Dump in Bottom.

Sizes No.	Depth	Front Width	Back Width	Weight	Stand-ard List
18-A	12"	18"	15½"	38 lbs.	\$5.30
20-A	12"	20"	17¼"	41 lbs.	5.80
22-A	12"	22"	19½"	44 lbs.	6.20
24-A	12"	24"	21½"	52 lbs.	6.70

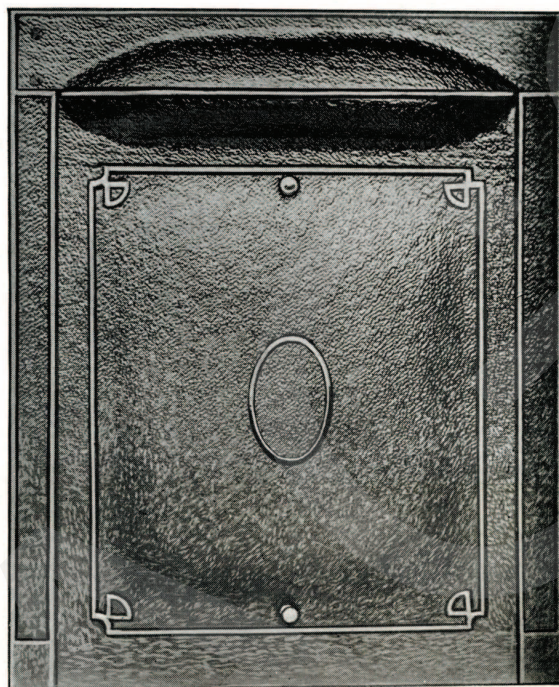


STYLE "C"

Black Varnish Finish. With Dump in Bottom.

Sizes No.	Depth	Front Width	Back Width	Weight	Stand-ard List
20-C	11"	20"	16½"	41 lbs.	\$6.00
22-C	11"	22"	19"	43 lbs.	6.50
24-C	11"	24"	20½"	45 lbs.	7.00
26-C	11"	26"	22½"	47 lbs.	7.50
30-C	11"	30"	25½"	53 lbs.	8.75

Railroads require Portable Baskets to be shipped crated.

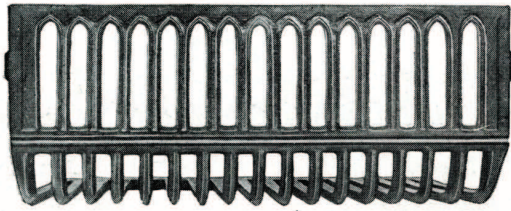


COMBINATION GRATES—4 PIECE

Summer Front, Frame, Basket and Ash Screen

Design No.	Height Overall	Width Overall	Size Opening	Net Weight with Cast Iron Summer Front	Net Weight with Sheet Steel Summer Front	List Price With Cast Iron Summer Front		List Price With Sheet Steel Summer Front	
						Black	Plated	Black	Plated
718	30¼	22½	18"	34 lbs.	\$7.50	\$9.50
918	30¼	22½	18"	35 lbs.	7.75	9.75
720	30¼	24½	20"	59 lbs.	39 lbs.	\$9.75	\$11.75	7.75	9.75
920	30¼	24½	20"	60 lbs.	40 lbs.	10.00	12.00	8.00	10.00

Can furnish in Oxydized Copper, Old Brass or Black Finish.
Not an ounce of Scrap Iron used.



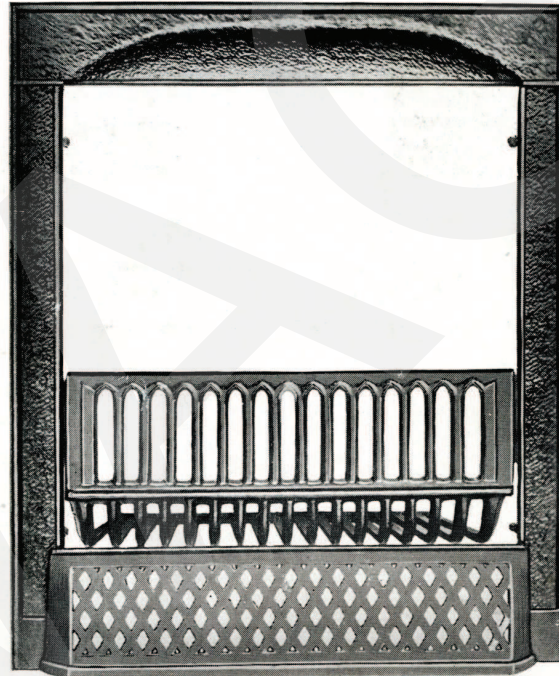
TILE GRATE BASKET
(One Lug on Each Side)

No.	Width at Front	Width at Back	Depth	Weight	List Price
720	20"	15"	7"	16 lbs.	\$2.50
920	20"	14"	9"	17 lbs.	2.75

EXTRA PARTS FOR COMBINATION GRATES

	Weight	Black	Plated
Extra Frames	15 lbs.	\$2.65	\$3.75
Extra Screens	4 lbs.	1.05	1.50
Extra Steel Summer Fronts	4 lbs.	1.05	1.50
Extra Cast Summer Fronts	24 lbs.	2.00	2.50

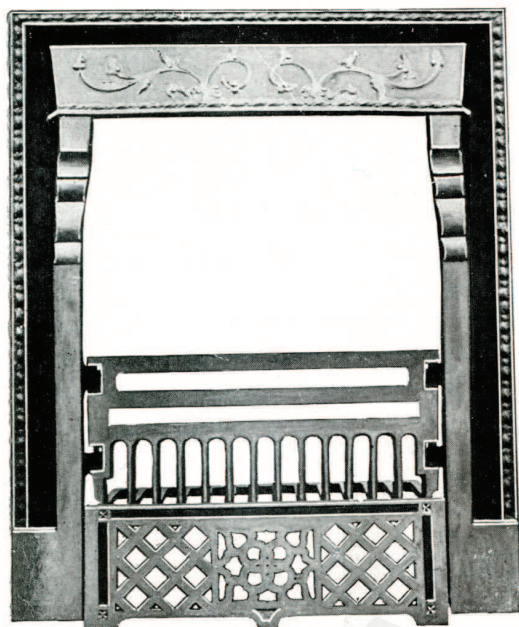
May be ordered in either black or oxydized copper finish.



COMBINATION GRATE—3 PIECE
Frame, Basket and Ash Screen

Design No.	Size Opening	Net Weight	List Price Black	List Price Plated
718	18"	30 lbs.	\$6.75	\$8.50
918	18"	31½ lbs.	7.00	8.75
720	20"	33½ lbs.	7.00	8.75
920	20"	35 lbs.	7.25	9.00

Can furnish in Oxydized Copper, Old Brass or Black Finish. Above prices include Frame, Basket and Screen. Not an ounce of Scrap Iron used.



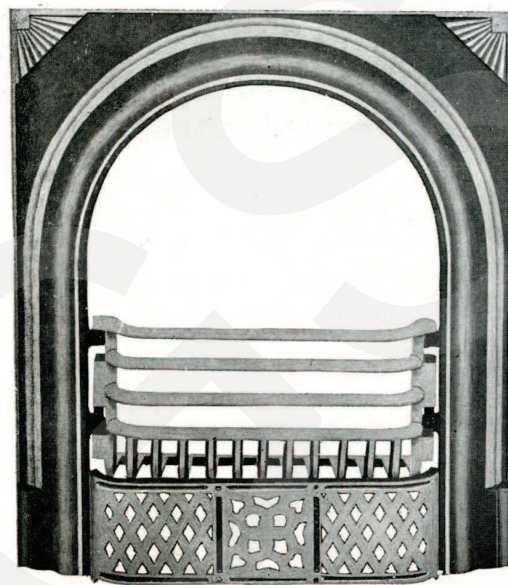
THREE-PIECE
SQUARE CANOPY GRATE

Varnished

Fitted with Square Ash Screen instead of Fender

STANDARD SIZES

No.	Height Overall	Width Overall	Size	Weight	List Price
14-S	29"	20½"	14"	27 lbs.	\$3.25
16-S	28½"	22½"	16"	29½ lbs.	3.75
18-S	28¼"	24½"	18"	32 lbs.	4.25
20-S	29"	26½"	20"	35½ lbs.	5.25



THREE-PIECE
ROUND FOUR-LUG GRATE

Varnished

Fitted with Round Ash Screen instead of Fender

STANDARD SIZES

No.	Size	Height Overall	Width Overall	Weight	List Price
14-R-S	14"	27¼"	21"	27 lbs.	\$3.25
16-R-S	16"	27"	23"	29½ lbs.	3.75
18-R-S	18"	27"	25"	32 lbs.	4.25
20-R-S	20"	27"	27¼"	35½ lbs.	5.25

The above prices are for three pieces only, viz.: Frame, Basket and Screen. The Frame has four lugs and is fitted with our four-lug Basket. Made of Pure Pig Iron. No Scrap Used.



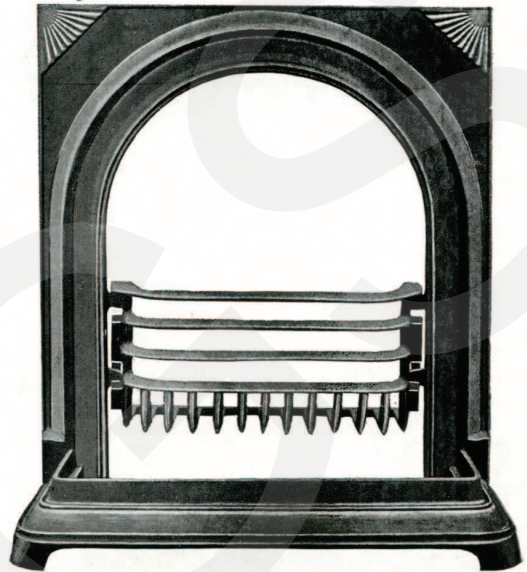
THREE-PIECE
SQUARE CANOPY GRATE

Varnished

Fitted with Fender instead of Screen

STANDARD SIZES

No.	Size	Height Overall	Width Overall	Weight	List Price
14-F	14"	29"	20 1/2"	38 lbs.	\$3.75
16-F	16"	28 1/2"	22 1/2"	42 lbs.	4.25
18-F	18"	28 1/4"	24 1/2"	45 lbs.	5.00
20-F	20"	29"	26 1/2"	49 lbs.	6.00



THREE-PIECE
ROUND FOUR-LUG GRATE

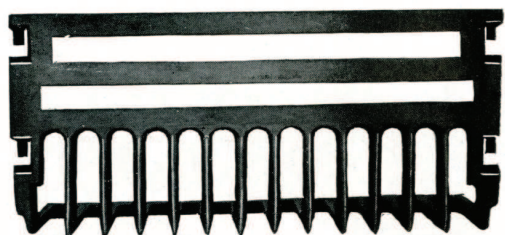
Varnished

Fitted with Fender instead of Screen

STANDARD SIZES

No.	Size	Height Overall	Width Overall	Weight	List Price
14-R-F	14"	27 1/4"	21"	38 lbs.	\$3.75
16-R-F	16"	27"	23"	42 lbs.	4.25
18-R-F	18"	27"	25"	45 lbs.	5.00
20-R-F	20"	27"	27 1/4"	49 lbs.	6.00

The above prices are for three pieces only, viz.: Frame, Fender and Basket. The Frame has four lugs and is fitted with our four-lug Basket. Made of Pure Pig Iron. No Scrap Used.

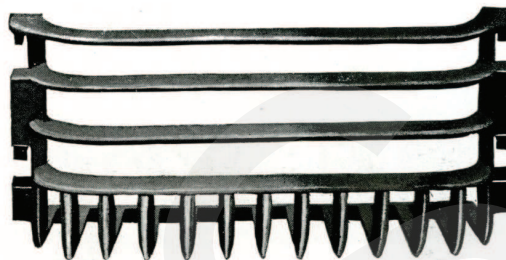


SQUARE BASKET

SQUARE BASKET

Lugs $3\frac{3}{4}$ " from bottom of top lug to bottom of bottom lug.

Size	Width at Back	From Lugs to Back	Weight	List
14"	12"	6"	10 lbs.	\$1.25
16"	14"	6"	12 lbs.	1.50
18"	16"	6"	13 lbs.	1.70
20"	18"	6"	14 lbs.	1.90

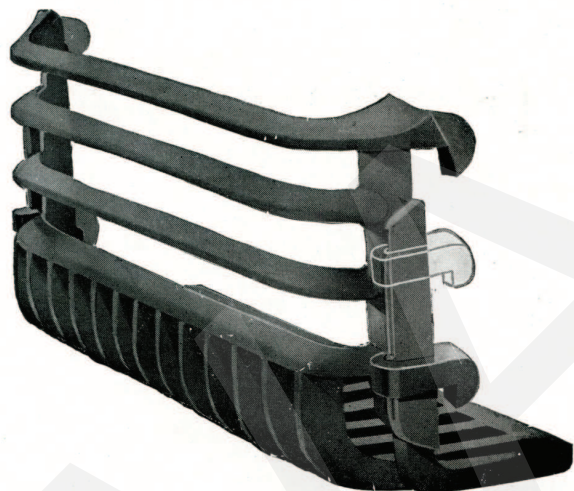


ROUND BASKET

ROUND BASKET

Lugs $3\frac{3}{4}$ " from bottom of top lug to bottom of bottom lug.

Size	Width at Back	From Lugs to Back	Weight	List
14"	12 $\frac{1}{2}$ "	4"	10 lbs.	\$1.25
15"	13 $\frac{1}{4}$ "	4"	10 $\frac{1}{2}$ lbs.	1.35
16"	14 $\frac{1}{2}$ "	4"	11 lbs.	1.50
17"	15 $\frac{1}{2}$ "	4"	11 $\frac{1}{2}$ lbs.	1.60
18"	16 $\frac{1}{2}$ "	4"	12 lbs.	1.70
19"	17 $\frac{1}{2}$ "	4"	13 lbs.	1.80
20"	18 $\frac{3}{4}$ "	4"	14 lbs.	1.90
22"	19 $\frac{1}{2}$ "	5 $\frac{1}{2}$ "	18 lbs.	2.60
24"	21"	5 $\frac{1}{2}$ "	20 lbs.	3.10



ADJUSTABLE LUG BASKET

Round or Square Pattern

With Sliding Bottom Lugs that cannot come off. Fit frames with lugs 2" to 5" apart.

Round Shipped Unless Square Specified

Size	Width at Back Square Pattern	Width at Back Round Pattern	Weight	From Lugs to Back Square Pattern	From Lugs to Back Round Pattern	List
14"	12"	12 $\frac{1}{2}$ "	10 lbs.	6"	4"	\$1.25
16"	14"	14 $\frac{1}{2}$ "	12 lbs.	6"	4"	1.50
18"	16"	16 $\frac{1}{2}$ "	13 lbs.	6"	4"	1.70
20"	18"	18 $\frac{3}{4}$ "	15 lbs.	6"	4"	1.90

TWO-PIECE GRATE SETS

Frame and Basket Only

Square or Round

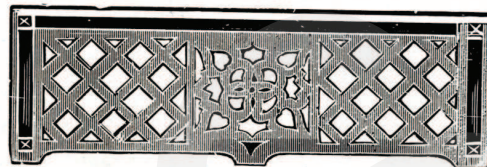
(Frame Varnished)

List	Weight	List
14"	25 lbs.	\$2.55
16"	27 lbs.	3.00
18"	29 lbs.	3.60
20"	32 lbs.	4.15
22" (Round only)	36 $\frac{1}{2}$ lbs.	5.25
24" " "	39 lbs.	6.55

Made of Pure Pig Iron. No Scrap Used.



ROUND SCREEN



SQUARE SCREEN

ROUND ASH SCREENS

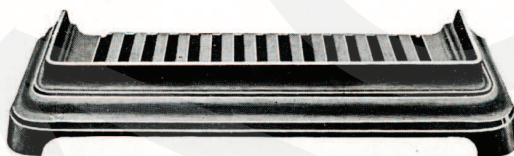
Varnished

<i>Size</i>	<i>Weight</i>	<i>List</i>
14"	2 lbs.	\$.75
16"	2½ lbs.	.85
18"	3 lbs.	.95
20"	3½ lbs.	1.05

SQUARE ASH SCREENS

Varnished

<i>Size</i>	<i>Weight</i>	<i>List</i>
14"	2 lbs.	\$.75
16"	2½ lbs.	.85
18"	3 lbs.	.95
20"	3½ lbs.	1.05



FENDER

FENDERS

Varnished

<i>Size</i>	<i>Weight</i>	<i>List</i>
14"	13 lbs.	\$1.40
16"	15 lbs.	1.60
18"	16 lbs.	1.85
20"	17 lbs.	2.25

EXTRA FRAMES

Varnished

Round or Square

<i>Size</i>	<i>Weight</i>	<i>List</i>
14"	15 lbs.	\$1.55
16"	16 lbs.	1.80
18"	17 lbs.	2.25
20"	18 lbs.	2.65
22" (Round only)	18½ lbs.	3.15
24" (Round only)	19 lbs.	4.15

ROUND SUMMER FRONTS

(For Round Common Grate Set)

*Varnished
Cast Iron*

<i>Size</i>	<i>Weight</i>	<i>List</i>
14"	10 lbs.	\$1.30
16"	13 lbs.	1.55
18"	15 lbs.	1.75
20"	18 lbs.	1.95

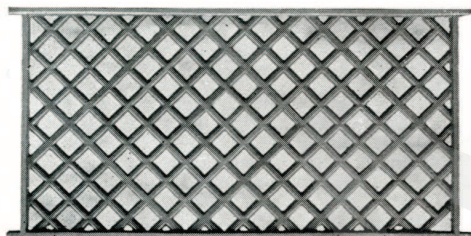
Made of Pure Pig Iron. No Scrap Used.



COLONIAL DOG IRONS

Dipped in black, glossy varnish
(Sold by actual weight per pair)

No.	Height	Length of Shank	Height of Leg	Weight per Pair
7½	13"	12½"	5"	15 lbs.
10	14½"	12½"	5"	20 lbs.
12	16"	13"	5½"	24 lbs.
15	17"	13"	5½"	30 lbs.



WALL VENTILATORS
(Cast Iron)

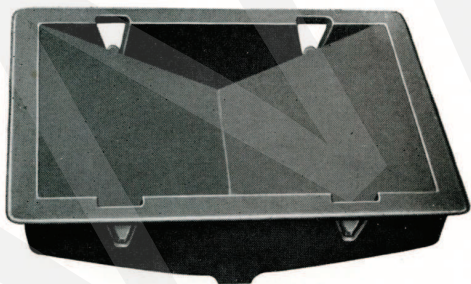
Size	Weight	List Price Each
8x12"	3 lbs.	\$.44
8x15"	3 lbs.	.60



ASH-PIT MOUTHS

(Cast Iron)

No.	Weight	Door Opening	List Price Each
10	20 lbs.	11x16"	\$4.20
20	16 lbs.	10x14"	3.36
30	12 lbs.	9x12"	2.90



ASH DUMPS
(Cast Iron)

Size	Weight	List Price Each
6¾x8¾"	5 lbs.	\$1.00

This door will swing either to the right or left. These Ash-Pit Mouths are the best on the market.

Made of Pure Pig Iron. No Scrap Used.

STOVE ACCESSORIES

DRIP PANS

Even Blue Steel, Rust-Proof, Oil Finish

	List Price per Doz.		List Price per Doz.
6½ x 13"	\$2.45	12x12"	\$3.50
8 x 12"	2.55	13x13"	4.00
7 x 14"	2.65	14x15"	4.75
8 x 15"	3.05	16x17"	5.50
10 x 14"	3.40	18x19"	6.50

STOVE PIPE—NESTED

ZNAPPER OR MAST-R-LOCK

Even Blue—Oiled

Size	5"	6"	6x5"	5x6"	7"	7x6"
Gauge	28	28	28	28	28	28
Wt. per 100 Jts.	184	216	192	192	250	228
Gauge	29	29	29	29	29	29
Wt. per 100 Jts.	161	196	180	180	226	210
Gauge	30	30	30	30	30	30
Wt. per 100 Jts.	149	172	160	160	196	184

Bundles 25 Joints

STOVE PIPE—FINISHED

Riveted—Even Blue—Oiled

Size	5"	6"	6x5"	5x6"	7"	7x6"
Gauge	26	26	26	26	26	26
Gauge	28	28	28	28	28	28
Gauge	29	29	29	29	29	29
Gauge	30	30	30	30	30	30

RANGE JOINTS

Even Blue Steel—Oiled

Size	Length	
7" 26 gauge with nickel damper	30"	6 in bundle
7" 26 gauge without damper	30"	10 in bundle
7" 28 gauge with nickel damper	30"	6 in bundle
7" 28 gauge without damper	30"	10 in bundle

T JOINTS

6"	Blue Oiled	28 Gauge
----	------------	----------

STEEL SHEETS

30x 96"	27 gauge—Black
36x 96"	27 gauge—Black
24x101"	29 gauge—Blue

STOVE PIPE ELBOWS

ONE-PIECE CORRUGATED

Even Blue—Oiled

Packed One Dozen to the Bundle

Size	Wt. per Doz.	
5"	10 lbs.	29 ga. long shank 90 deg.
6"	13 lbs.	29 ga. long shank 90 deg.
7"	18 lbs.	29 ga. long shank 90 deg.
6"	15 lbs.	(Pkd. 2 doz. to bdl.) 28 ga. 45 deg.
7"	19 lbs.	(Pkd. 2 doz. to bdl.) 28 ga. 45 deg.

STOVE PIPE ELBOWS

ADJUSTABLE

Even Blue—Oiled

Packed One Dozen to the Bundle

Size	Wt. per Doz.	
5" (Regular)	10	28 ga. Reg. ends
5½"	13	28 ga. Reg. ends
6"	13	28 ga. Reg. ends
7"	17	28 ga. Reg. ends
5" (Long shank)	13	28 ga. 4" ends
5½"	15	28 ga. 4" ends
6"	16	28 ga. 4" ends
7"	20	28 ga. 4" ends

STOVE PIPE DAMPERS

5"	per dozen
5½"	per dozen
6"	per dozen
7"	per dozen

STOVE COLLARS

Plain Tin

5"	per dozen
6"	per dozen
7"	per dozen

STOVE ASBESTOS CEMENT

1-lb. Cans	per can
2-lb. Cans	per can
5-lb. Cans	per can
10-lb. Cans	per can

STOVE POLISH

5-lb. Cans Polish (Paste)	per can
1-gal. Cans Paint	per can

RANGE BOILERS

Galvanized—Riveted or Welded

Standard

Size	Gallons	Wt. Riveted	Wt. Welded
12x60"	30	69	64
14x60"	40	84	80
16x60"	52	117	113
18x60"	66	156	152
20x60"	82	175	164
22x60"	100	221	212
24x60"	120	256	235
24x72"	144	292	262

Larger or heavier built can be furnished

Stands to fit

For Prices on Above See Price Sheet

STOVE BOARDS



WOOD-LINED "CRYSTAL"

Size	24x24	26x26	28x28	30x30	33x33	36x36
Weight, doz.	88 lbs.	102 lbs.	120 lbs.	134 lbs.	163 lbs.	194 lbs.

PAPER-LINED "CRYSTAL"

Size	18x18	24x24	26x26	28x28	30x30	32x32	35x35
Weight, doz.	18 lbs.	34 lbs.	39 lbs.	45 lbs.	52 lbs.	59 lbs.	70 lbs.

Wood-Lined Boards—Half dozen in a case

Paper-Lined Boards—One dozen in a case

WOOD-LINED "WALNUT"

(Grained Enamel)

Size	24x24	26x26	28x28	30x30	33x33	36x36
Weight, doz.	96 lbs.	112 lbs.	130 lbs.	146 lbs.	176 lbs.	215 lbs.

(Oblong)

Size	28x34
Weight, doz	163 lbs.



UNLINED WALNUT *Beautifully Grained*

Size	Wt. Doz.	List Doz.
24x24"	37 lbs.	\$3.69
26x26"	44 lbs.	4.25
28x28"	51 lbs.	4.86
30x30"	58 lbs.	5.43
32x32"	66 lbs.	6.50
26x32"	54 lbs.	4.81
28x34"	62 lbs.	5.75
30x36"	70 lbs.	6.59
34x36"	82 lbs.	7.94

UNLINED GALVANIZED *Burnished Satin Finish*

Size	Wt. Doz.	List Doz.
24x24"	37 lbs.	\$3.69
26x26"	44 lbs.	4.25
28x28"	51 lbs.	4.86
30x30"	58 lbs.	5.43
32x32"	66 lbs.	6.50

For Prices on Above See Price Sheet

LYON-YOUNG PRINTING CO.
ATLANTA, GA.

Engravings by
PHOTO-PROCESS ENGRAVING CO.

150